



KEMA



**PRODUCT
CATALOGUE**

www.kema.si



KEMA SLOVENIA I

publisher **Kema d.o.o.**, Puconci 393, 9201 Puconci, Slovenia

T: ++386 (0)2 545 95 00 | **F:** ++386 (0)2 545 95 29

E: info@kema.si | **W:** www.kema.si

Pictures are symbolic. I We reserve the right to change of product program.
We aren't responsible for any print errors.

Where is this place from where Kema is sending into the world all the building material presented in their new extensive catalogue, you may wonder. To cut the answer short, Puconci are situated about 220 km south of Vienna, 280 km west of Budapest, 140 km north of Zagreb, 180 km northeast of Ljubljana and just a few kilometres from the main highway connecting Budapest and Barcelona.

At the western edge of the onetime huge Pannonian Sea, today's Pannonian flatland lies. The entire flatland is known for its special architecture and building style. The people here built houses from upright wooden beams which on the inside and outside were tilled with clay and rough straw. Often the roofs were covered with rye straw as well. Every year the houses were whitewashed with slaked lime. After a few years this procedure turned out to be a very good protection for houses. It protected the buildings from possible bad environmental impacts, insects and similar pests. On the inside the houses were very simple, but cosy and nice.

Only few of these houses were preserved to this day. They are in fact very rare nowadays. Still, people remember them as simple, but very comfortable houses, warm in the winter and cool in the summer. They offered a healthy environment for their residents who lived happier in their houses than the townspeople in theirs. Not everything the folk believed in was good and true, but lately the builders are looking for solutions to give people the opportunity to choose natural materials and live in buildings that are placed in a natural and healthy environment, just like in the past. We all tend to live a healthy, longer and happier life. Health is namely one of the basic terms for a happy life, but for sure not the only term, because not even the healthiest house can buy you happiness. There is an old saying that confirms our thesis: »Every man is the architect of his fortune!«

The products in our catalogue can not give you happiness, but they can help you build for generations, make your houses look attractive on the outside and allow you to create a healthy environment to live in. With our materials you will be able to renovate even the oldest buildings and restore their former glory and brilliance or build the nicest and highest palaces in the world. With us building will become easier and quicker and our advisors will be at your service every day. This may give you more time for building happiness in your own life and in the life of your loved ones. Your buildings will leave a trail indicating this was the work of successful builders and you will feel proud to have achieved more and to have exceeded your competition. By using good materials and verified solutions your success will be assured.

And last but not least, with each bag, bucket or box we send you a piece of that cosiness, simplicity, health and nature and a piece of our old little house which makes us here so happy. Perhaps our good wishes will encourage you this year to finally find what you have been looking for all this time.



REFLECTION OF PERFECTION

Kema d.o.o. is a company marked by clear features, firm character, winning philosophy, market confidence and endeavors towards perfection in all segments of its operations.



WE DO NOT MANUFACTURE,
WE CREATE!

The key to development of top class products lies in creative and innovative approaches in all segments of production. While closely monitoring quality at all stages of production, we are also constantly searching for the best ways of providing our customers with the best possible products for optimal execution of all types of construction projects.

SOURCE OF SUCCESS, CORNERSTONE OF PROGRESS AND QUALITY

The key building blocks of our operations come from our environment. It is our source of inspiration and power and home of the essence of our production. The foundation of our company is much deeper than ordinary manufacture. Through decades of tradition, experience, knowledge and constant development, our success has been the result of hard work, dedication and optimal cultivation of business opportunities and natural resources.

Our own sand quarry allows us to monitor quality throughout the production process, from basic raw materials to the finished product. First class silica sand extracted from a mine near Puconci assures competitive, unhindered and closely controlled of top of the range construction materials.



DEVELOPMENT REQUIRES KNOWLEDGE



The quality of our products is the result of our own dedication. An in-house scientific research and development department allows us to constantly improve our products and create new solutions for construction needs.



DEVELOPING AND COUNSELING

The most important measure of a good product, however, always stays the same: user experience. Our product range is constantly refreshed in order to provide our customers with the best possible experience.

Personal counseling and sales activities that cater to the needs of construction enable all customer profiles fast, efficient and straightforward access to all the right products in one place. In depth knowledge of construction demands constant expansion of knowledge as new developments in construction technology come about faster and faster.

UPGRADING, PROGRESSING, LEADING

We have established a long tradition in achievements and development in construction, but we prefer not to rest on our laurels. Stopping means falling back. Constant progress is a top priority and we are always open to new challenges.



Alphabetical Index

A	ALUMINIUM SPREADER	115	KEMA SWELL	66	KEMASAN 520	75
	ARTCOLOR CLEANER GEL	113	KEMA SWELL 05	66	KEMASAN 550	75
	ARTCOLOR ADDITIVE	45	KEMABAND SEALING RIBBON 12	50, 64	KEMASAN 580	75
B	BABY SAND	101	KEMABAND SLEEVE M12	51, 65	KEMASAN 590	73
	BEACHVOLLEY SAND	100	KEMABAND SLEEVE M35	51, 65	KEMASAN 590 F	74
	BETONPROTEKT COLOR ACRYL	56	KEMABAND TACK 12	50, 64	KEMASAN 590 FF	74
	BETONPROTEKT COLOR ELASTIK	56	KEMABAND X CORNER ELEMENT	51, 65	KEMASAN 595 S	74
	BETONPROTEKT F	54	KEMABAND Y CORNER ELEMENT	51, 64	KEMASIL	46
	BETONPROTEKT K2	55	KEMABOND 120	40	KEMASOL	108
	BETONPROTEKT K2	55	KEMABOND 121	40	KEMASOL MICRO	109
	BETONPROTEKT RP	54	KEMABOND FLEX 131	41	KEMATERM 230	70
	BETONPROTEKT RT	54	KEMACRYL	48, 57, 78	KEMATERM PU	70
	BUILDING SAND	96	KEMACURE EKO	84	KEMAZIM OC	111
C	CLEANING FLOAT	114	KEMAFIN CEMENT W	72	L	
	CORRUGATED BONDING ELEMENT	118	KEMAFIN ELECTRO GYPSUM	72	LINEA 803 SL	80
D	DRESSING SAND	100, 102	KEMAFLEX ACRYL	47	LINEA 810 SL	80
	DRY QUARTZ SAND 0,4-0,9 mm	99	KEMAFLEX PE X10	114	LINEA 811 SL	80
	DRY QUARTZ SAND 0,9-1,4 mm	99	KEMAFLEX PU	47	LINEA 820 M	81
E	EPOXY SAND	91	KEMAFOB	108	LINEA 830 SL	81
F	FILTER WHITE DRY QUARTZ SAND	104	KEMAFOB AQUA	108	LINEA 840 M	82
	FILTER WHITE MOIST QUARTZ SAND	103	KEMAFOL	67	LINEA 841 SL	81
	FILTER NATURAL DRY QUARTZ SAND	104	KEMAGLET FX	70	LARGE-SURFACE SCRAPER	116
	FILTER NATURAL MOIST QUARTZ SAND	103	KEMAGLET G	71	M	
	FUGA SAND 80	98	KEMAGRES	40	MIXING HEAD FOR 2K COMPOUNDS	118
	FUGA SAND 200	98	KEMAGRUND A	48, 58, 78, 83	N	
G	GRAVEL FOR TAMPON 0 - 40 mm	96	KEMAKOL FLEX 170	41	NANOCOLOR	44
H	HIDROSTOP 94	60	KEMAKOL MARMOR 180	42	P	
	HIDROSTOP ACRYL (COMP. B)	62	KEMAKOL MARMOR 181	42	PVC BUCKET 18,5 L	117
	HIDROSTOP DP	50, 61	KEMAKOL RAPID 193	43	R	
	HIDROSTOP ELASTIK	49, 60	KEMALASTIC	41	ROLLER HANDLE	117
	HIDROSTOP FLEX	60	KEMALATEX	58, 79, 82	Q	
	HIDROSTOP KIT	60	KEMAMENT HIPER F	111	QUARTZ SAND FOR CONCRETE 0 - 30 mm	96
	HIDROSTOP PENETRAT	61	KEMAMENT L 10	110	QUARTZ SAND 0,4 - 1,4 mm	101
	HIDROSTOP VARIO	49, 55, 61	KEMAMENT VOP	110	QUARTZ SAND 0,9 - 1,4 mm	101
	HIDROSTOP VH (COMP. A)	62	KEMAMIX F	71	S	
	HIDROZAT	63	KEMAMIX G	71	SAND FOR MORTAR AND PLASTER	97
	HIDROZAT MOMENT	63	KEMAMIX SPX	72	SPIKE ROLLER	115
	HOLKER PROFIL 30/100/2500	117	KEMAPOX ARTCOLOR	45	SPIKE SOLES	115
	HYDROMENT DRYING PLASTER	73	KEMAPOX CHIPS	92	T	
	HYDROMENT FINE PLASTER	73	KEMAPOX CLEANER	117	TAL M KORUND 3	84
I	INJECTION PACKERS	114	KEMAPOX DENS SM	92	TAL M KORUND 10	84
	ISOTAL	57	KEMAPOX FILL 1000	59, 86	TAL M KVARC	83
K	KAMENOL	43	KEMAPOX FINAL 4000	89	TOOTHED BLADE	116
	KEMA EXPAND	109	KEMAPOX FINAL 4000 QC	90	V	
	KEMA IMPREGNATOR	85	KEMAPOX FINAL 4500 AQUA M	90	VELOUR ROLLER	116
	KEMA IMPREGNATOR POWDER	85	KEMAPOX FINAL 5000	89	W	
	KEMA MASTIC WA	66	KEMAPOX FINAL 5100 CHEMRES	89	WHITE BUILDING SAND	97
	KEMA MIKROSILIKA	112	KEMAPOX FINAL 6000	88	WHITE QUARTZ SAND 0,1 - 0,8 mm	101
	KEMA NONSHRINK	112	KEMAPOX FINAL 6100 CHEMRES	88	WHITE QUARTZ SAND 0,2 - 1,7 mm	102
	KEMA PP FIBER	85, 112	KEMAPOX FINAL 6500 AQUA	88	WHITE QUARTZ SAND 1 - 2 mm	100
	KEMA STARLIGHT FLEX PREMIUM	42	KEMAPOX GRUND 2000	86	WHITE DRY QUARTZ SAND	98
			KEMAPOX GRUND 2010	87	WHITE DRY QUARTZ SAND 0,1 - 0,8 mm	99, 105
			KEMAPOX GRUND 2040	87	WHITE DRY QUARTZ SAND 0,5 - 1,5 mm	105
			KEMAPOX LF	43, 46	WHITE DRY QUARTZ SAND 0,2 - 1,7 mm	105
			KEMAPOX LINK	59, 82, 91	WHITE DRY QUARTZ SAND 1,0 - 2,0 mm	105
			KEMAPOX SOLVENT	92		
			KEMAPOX WHIPE BLACK	113		
			KEMAPOX WHIPE WHITE	113		
			KEMAPUR FILL 1150	59, 86		

System solutions

BATHROOM IMPLEMENTATION	12	RESTORATION OF DAMAGE OWING TO CAPILLARY		GROUTING/ANCHORING OF CRANE TRACK	28
IMPLEMENTATION OF TERRACE OR BALCONY	13	MOISTURE IN THE GROUND FLOOR	21	IMPLEMENTATION OF JOINT BETWEEN	
IMPLEMENTATION OF TERRACE OR BALCONY WITH		RESTORATION OF DAMAGE OWING TO CAPILLARY		HORIZONTAL AND VERTICAL HYDRO INSULATION	29
PARAPET WALL	14	MOISTURE IN A BUILDING WITH BASEMENT -		RESTORATION OF NEW DAMAGED CONCRETE	30
IMPLEMENTATION OF A POOL	15	Building inaccessible from outside	22	RESTORATION OF OLD DAMAGED CONCRETE	31
LAYING CERAMICS ON UNDERFLOOR HEATING	16	RESTORATION OF DAMAGE OWING TO CAPILLARY		INSTALLATION OF INDUSTRIAL FLOOR	32
SEALING OF NEWLY CONSTRUCTED BASEMENT	17	MOISTURE IN BUILDING WITH BASEMENT -		REPAIR AND RENOVATION OF CEMENT- BASED	
IMPLEMENTATION OF CERAMIC FAÇADE		Building accessible from outside	23	INDUSTRIAL FLOORS	33
(DECORATIVE STONE)	18	CONSTRUCTION OF WATER RESERVOIR	24	CONNECTING CRACKS IN FLOORS	34
USE OF LEVELLING COMPOUNDS AND INTERIOR		RESTORATION OF WATER RESERVOIR	25	INSTALLATION OF EPOXY FLOOR IN HOME GARAGE	35
PLASTERS ON A BRICK OR AB WALL	19	RESTORATION OF TREATMENT PLANT	26	INSTALLATION OF EPOXY FLOOR IN PARKING	
SEALING OF BASEMENT (RESTORATION)	20	DETAIL OF SEALING OF CONCRETE CONSTRUCTIONS	27	GARAGE - MEZZANINE	36

Table of contents

TILING		39
ADHESIVES FOR TILES, NATURAL STONE, GAS CONCRETE		40
KEMABOND 120 · KEMABOND 121 · KEMAGRES		40
KEMALASTIC · KEMABOND FLEX 131 · KEMAKOL FLEX 170		41
KEMA STARLIGHT FLEX PREMIUM · KEMAKOL MARMOR 180 · KEMAKOL MARMOR 181		42
KEMAKOL RAPID 193 · KAMENOL · KEMAPOX LF		43
JOINT GROUTING COMPOUNDS		44
NANOCOLOR		44
KEMAPOX ARTCOLOR · ARTCOLOR ADDITIVE		45
KEMAPOX LF		46
SEALING COMPOUNDS		46
KEMASIL		46
KEMAFLEX ACRYL · KEMAFLEX PU		47
PRIMERS AND COATINGS		48
KEMACRYL · KEMAGRUND A		48
WATERPROOF COATINGS AND SEALING RIBBONS		49
HIDROSTOP ELASTIK · HIDROSTOP VARIO		49
HIDROSTOP DP · KEMABAND SEALING RIBBON 12 · KEMABAND TACK 12		50
KEMABAND Y CORNER ELEMENT · KEMABAND X CORNER ELEMENT · KEMABAND SLEEVE M12 · KEMABAND SLEEVE M35		51
CONCRETE RESTORATION AND WATERPROOFING		53
PRODUCTS FOR RESTORATION AND PROTECTION OF CONCRETE		54
BETONPROTEKT RT · BETONPROTEKT RP · BETONPROTEKT F		54
BETONPROTEKT K2 · HIDROSTOP VARIO		55
BETONPROTEKT COLOR ELASTIK · BETONPROTEKT COLOR ACRYL		56
ISOTAL · KEMACRYL		57
KEMAGRUND A · KEMALATEX		58
KEMAPOX FILL 1000 · KEMAPUR FILL 1150 · KEMAPOX LINK		59
WATERPROOF COATINGS AND FAST-SETTING MORTARS		60
HIDROSTOP 94 · HIDROSTOP ELASTIK · HIDROSTOP FLEX		60
HIDROSTOP VARIO · HIDROSTOP DP · HIDROSTOP PENETRAT		61
HIDROSTOP VH (KOMP. A) · HIDROSTOP ACRYL (KOMP. B)		62
HIDROSTOP KIT · HIDROZAT · HIDROZAT MOMENT		63
SEALING RIBBONS		64
KEMABAND SEALING RIBBON 12 · KEMABAND TACK 12 · KEMABAND Y CORNER ELEMENT		64
KEMABAND X CORNER ELEMENT · KEMABAND SLEEVE M12 · KEMABAND SLEEVE M35		65
KEMA SWELL · KEMA SWELL 05 · KEMA MASTIC WA		66
KEMAFOIL		67
RENDERS AND MORTARS		69
PRODUCTS FOR THERMAL INSULATION FACADE		70
KEMATERM 230 · KEMATERM PU		70
LEVELLING COMPOUNDS FOR WALLS AND CEILINGS		70
KEMAGLET FX		70
KEMAGLET G		71
READY-MIXED PLASTERS AND MORTARS		71
KEMAMIX G · KEMAMIX F		71
KEMAMIX SPX		72
BINDING AGENTS		72
KEMAFIN CEMENT W · KEMAFIN ELECTRO GYPSUM		72
RESTORATION PLASTERS		73
HYDROMENT DRYING PLASTER · HYDROMENT FINE PLASTER · KEMASAN 590		73
KEMASAN 590 F · KEMASAN 590 FF · KEMASAN 595 S		74
KEMASAN 550 · KEMASAN 520 · KEMASAN 580		75

FLOORING

77

PRIMERS AND COATINGS	78
KEMACRYL · KEMAGRUND A	78
KEMALATEX	79
FLOOR-LEVELLING COMPOUNDS	80
SELF-LEVELLING FLOOR COMPOUNDS · LINEA 803 SL · LINEA 810 SL · LINEA 811 SL	80
LINEA 830 SL · LINEA 841 SL · FLOOR-LEVELLING MORTARS · LINEA 820 M	81
LINEA 840 M · PRIMERS · KEMAPOX LINK · KEMALATEX	82
KEMAGRUND A	83
INDUSTRIAL FLOORS	83
TAL M KVARC	83
TAL M KORUND 3 · TAL M KORUND 10 · KEMACURE EKO	84
KEMA IMPREGNATOR POWDER · KEMA IMPREGNATOR · KEMA PP FIBER	85
EPOXY AND POLYURETHANE FLOORING AND COATING	86
SURFACE PREPARATION · KEMAPOX FILL 1000 · KEMAPUR FILL 1150 · KEMAPOX GRUND 2000	86
KEMAPOX GRUND 2010 · KEMAPOX GRUND 2040	87
THIN-LAYER EPOXY SYSTEMS · KEMAPOX FINAL 6000 · KEMAPOX FINAL 6100 CHEMRES · KEMAPOX FINAL 6500 AQUA	88
SELF-LEVELLING EPOXY SYSTEMS · KEMAPOX FINAL 5000 · KEMAPOX FINAL 5100 CHEMRES	89
EPOXY VARNISHES · KEMAPOX FINAL 4000	89
KEMAPOX FINAL 4500 AQUA M · KEMAPOX FINAL 4000 QC	90
ADDITIONAL PRODUCTS FOR EPOXY SYSTEMS · KEMAPOX LINK · EPOXY SAND	91
KEMAPOX DENS SM · KEMAPOX CHIPS · KEMAPOX SOLVENT	92

QUARTZ SAND

95

CONSTRUCTION	96
SAND FOR CONCRETE · QUARTZ SAND FOR CONCRETE 0 - 30 mm · GRAVEL FOR TAMPON 0 - 40 mm	96
SAND FOR MORTAR AND PLASTER · BUILDING SAND	96
WHITE FINE BUILDING SAND · SAND FOR MORTAR AND PLASTER	97
SAND FOR GROUTING OF PAVING UNITS · FUGA SAND 80 · FUGA SAND 200 · SAND FOR GENERAL USE · WHITE DRY QUARTZ SAND	98
SPORT AND RECREATION	99
SAND FOR PREPARING FIELD WITH ARTIFICIAL GRASS (soccer, tennis, golf) · WHITE DRY QUARTZ SAND 0,1 - 0,8 mm · DRY QUARTZ SAND 0,4 - 0,9 mm	99
DRY QUARTZ SAND 0,9 - 1,4 mm	99
SAND FOR VOLLEYBALL COURTS (BEACHVOLLEY SAND) · SAND FOR BOCCIE COURTS · WHITE QUARTZ SAND 1 - 2 mm	100
SAND FOR MAINTENANCE OF SPORTS GREENS (soccer, tennis, golf) · DRESSING SAND	100
WHITE QUARTZ SAND 0,1 - 0,8 mm · QUARTZ SAND 0,4 - 1,4 mm · QUARTZ SAND 0,9 - 1,4 mm	101
GARDEN	101
SAND FOR CHILDREN'S PLAYGROUNDS AND SANDBOXES · BABY SAND	101
SAND FOR MAINTENANCE GREENS (lawns) · DRESSING SAND	102
SAND FOR GARDENING · WHITE QUARTZ SAND 0,2 - 1,7 mm	102
WATER FILTRATION	103
FILTER SAND · FILTER NATURAL MOIST QUARTZ SAND · FILTER WHITE NATURAL MOIST QUARTZ SAND	103
FILTER SAND · FILTER NATURAL DRY QUARTZ SAND · FILTER WHITE DRY QUARTZ SAND	104
INDUSTRY	105
SAND FOR SANDBLASTING · WHITE DRY QUARTZ SAND 0,1 - 0,8 mm · WHITE DRY QUARTZ SAND 0,5 - 1,5 mm	105
WHITE DRY QUARTZ SAND 0,2 - 1,7 mm · WHITE DRY QUARTZ SAND 1,0 - 2,0 mm	105

AUXILIARY PRODUCTS

107

AGENTS FOR INJECTING AND SURFACE PROTECTION	108
KEMAFOB · KEMAFOB AQUA · KEMASOL	108
KEMASOL MICRO · KEMA EXPAND	109
ADDITIVES FOR CONCRETE AND CEMENT MORTAR	110
KEMAMENT L 10 · KEMAMENT VDP	110
KEMAMENT HIPER F · KEMAZIM OC	111
KEMA MIKROSILIKA · KEMA NONSHRINK · KEMA PP FIBER	112
TOOLS AND AUXILIARY PRODUCTS	113
ARTCOLOR CLEANER GEL · KEMAPOX WHIPE WHITE · KEMAPOX WHIPE BLACK	113
CLEANING FLOAT · KEMAFLEX PE X10 · INJECTION PACKERS	114
SPIKE ROLLER · SPIKE SOLES · ALUMINIUM SPREADER	115
TOOTHED BLADE · LARGE-SURFACE SCRAPER · VELOUR ROLLER	116
ROLLER HANDLE · KEMAPOX CLEANER · PVC BUCKET 18,5 L · HOLKER PROFILE 30/100/2500	117
MIXING HEAD FOR 2K COMPOUNDS · CORRUGATED BONDING ELEMENT	118



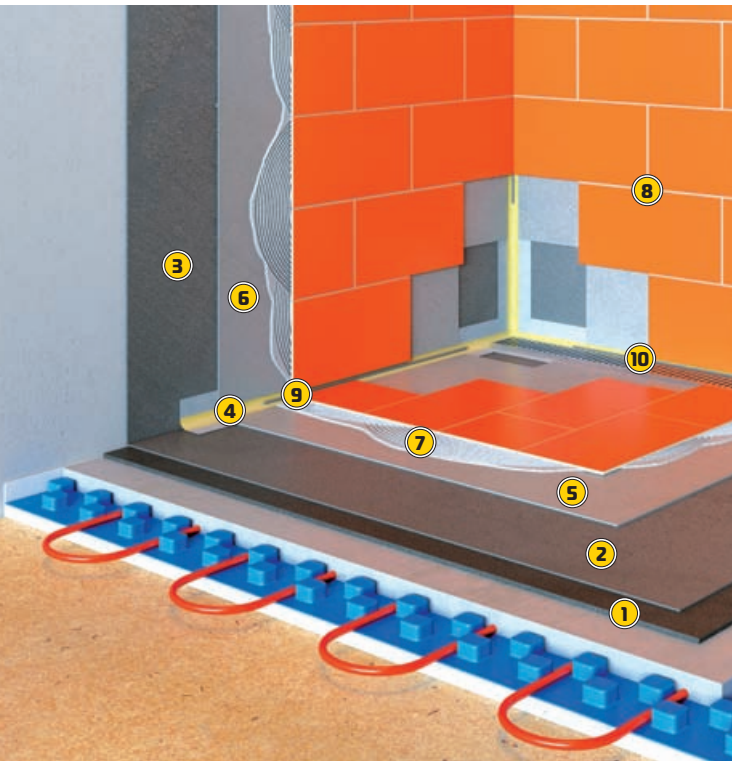


SYSTEM
SOLUTIONS

- ① LINEA LEVELING COMPOUND
- ② ⑤ HIDROSTOP ELASTIK/VARIO
- ③ ⑥ HIDROSTOP DP
- ④ KEMABAND

- ⑦ KEMAKOL FLEX 170
- KEMABOND FLEX 131
- ⑧ NANOCOLOR
- KEMAPOX ARTCOLOR

- ⑨ KEMAFLEX PE X10
- ⑩ KEMASIL



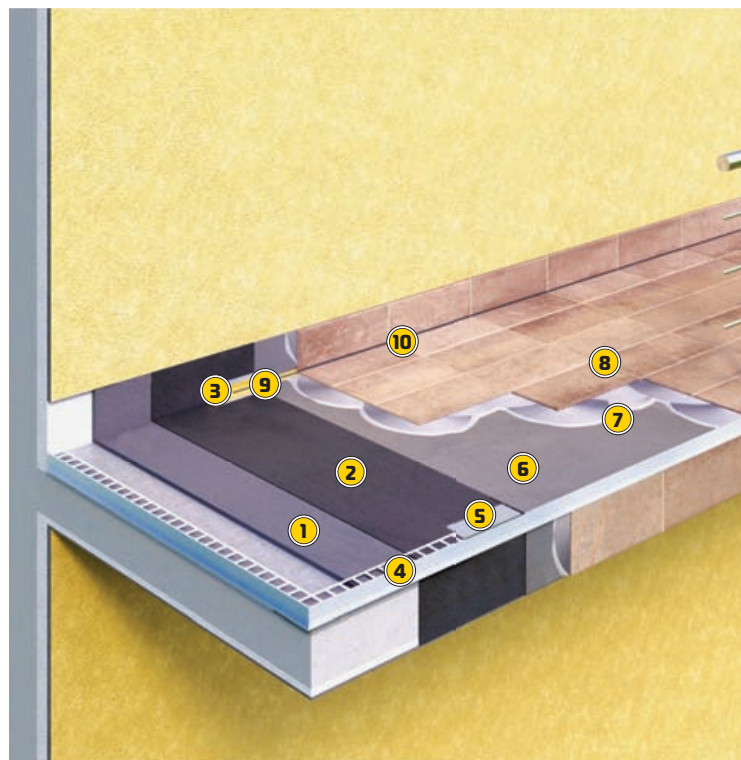
Bathrooms belong to the so-called wet rooms, where increased humidification of wall and floor surfaces can be expected. The ceramic surface, grouting compound or adhesive under the ceramics cannot provide waterproofing of the covering surface. In addition, we have in such areas breakthroughs in the surfaces due to the inflow and outflow pipes. So, even constant local humidification through the covering surface can cause problems in the primary construction and consequently also in the neighboring areas. Careful and qualitative installation is a prerequisite for years of reliable use of bathrooms.

BATHROOM IMPLEMENTATION

IMPLEMENTATION OF TERRACE OR BALCONY

To be in touch with nature is still a basic need of every human being. Therefore, every house or apartment usually has at least a loggia, balcony or terrace. Since these are more exposed parts of the facade it is very important that the terrace or balcony is implemented properly and qualitatively.

In addition to procedures of sealing surfaces and edge contacts, which are discussed below, details of sealing and fixing of railing poles, pipe penetrations, floor drains, etc. are also important. If possible, there should be as little as possible of these additional elements on the surface, because each of them represents a potentially weak position and needs special treatment. For example, the mounting of rails from the side of the balcony is, in terms of sealing, less problematic than mounting through the horizontal surface. All these elements therefore require treatment with special epoxy flanges, all in accordance with the details that are available in the department of the technical advisory service.

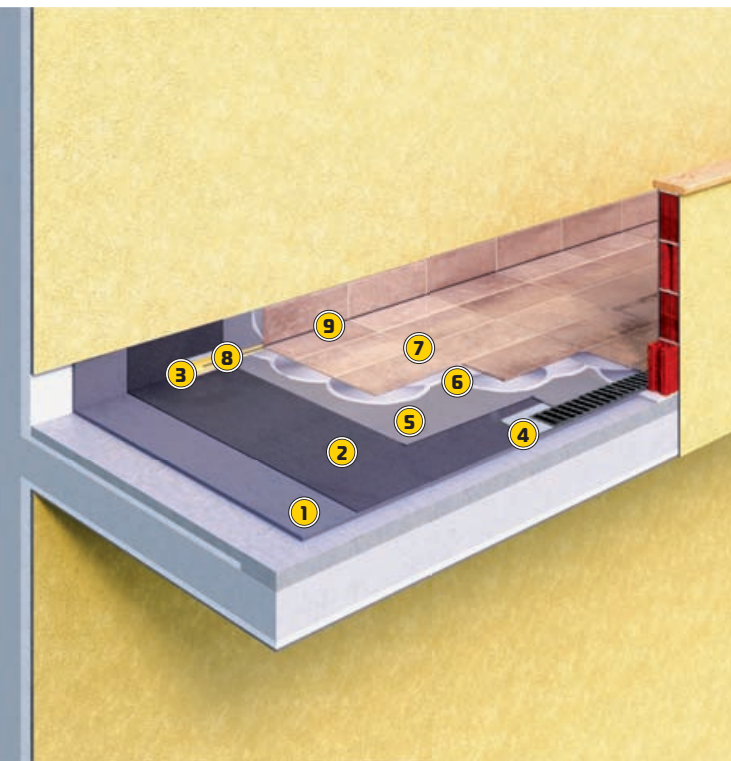


- 1 LINEA 820 M
- 2 6 HIDROSTOP ELASTIK/VARIO
- 3 KEMABAND
- 4 PROFILE

- 5 KEMABAND TACK
- 7 KEMAKOL FLEX 170
- KEMABOND FLEX 131

- 8 NANOCOLOR
- KEMAPOX ARTCOLOR
- 9 KEMAFLEX PE X10
- 10 KEMAFLEX PU

- | | | | | | |
|---|---------------|-------------------------|------------------|-------------------|-----------------|
| 1 | LINEA 820 M | 4 | KEMABAND TACK | | |
| 2 | 5 | HIDROSTOP ELASTIK/VARIO | 6 | KEMAKOL RAPID 193 | |
| 3 | KEMABAND | 7 | NANOCOLOR | 8 | KEMAFLEX PE X10 |
| 4 | KEMABAND TACK | | KEMAPOX ARTCOLOR | 9 | KEMAFLEX PU |



Terrace or balcony with parapet wall is an example of construction, where a wall from brick stones or aerated concrete blocks is built on the outer edge of the concrete slab, which serves as a protective enclosure. With this the balcony or terrace becomes like a pool because the water cannot run over the edge of the terrace or balcony. According to this spot- like or strip- like runoffs and slopes of the substrate have to be installed, and the whole area properly sealed prior to laying of ceramics.

The weakest parts on terraces or balconies with parapet wall are vertical walls and the sloping screed. In the case of local water ingress in the sloping screed the water spreads without hindrance over the whole surface because of its very porous structure, as a result capillary moisture occurs in the walls. This causes efflorescence, wet stains, falling-off of plaster and final paints or damage on facades.

IMPLEMENTATION OF TERRACE OR BALCONY WITH PARAPET WALL

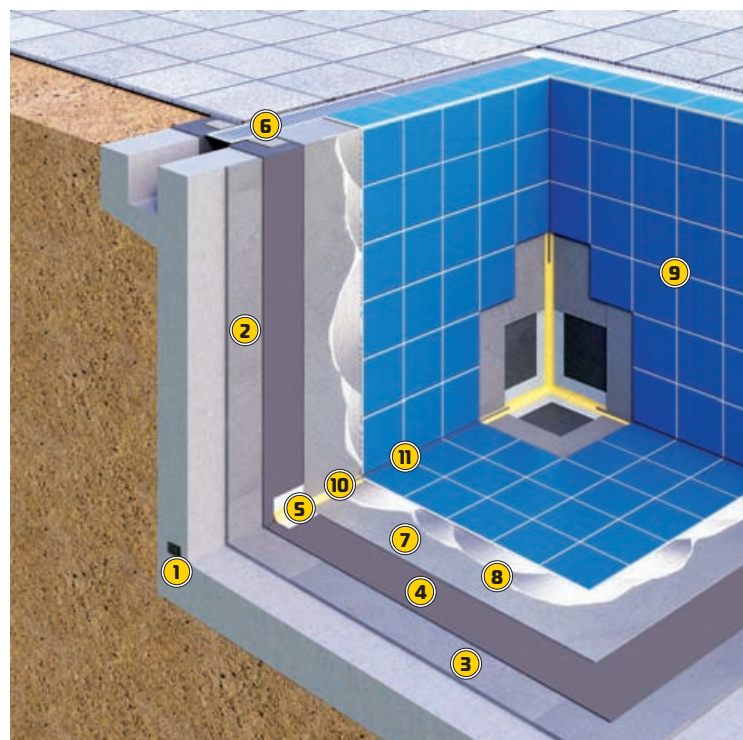
IMPLEMENTATION OF A POOL

In recent years, more and more people decide to construct swimming pools due to the large availability of pool technologies. The most popular, high-quality, durable and widely used are brick and concrete pools, for the construction of which experience and knowledge is needed.

Outdoor pools are exposed to large temperature variations, which can lead to damage, which can be fatal for sealing and durability of the pool. The consequence of bad implementation is usually reflected in form of various damages on the pools, the most critical among them are hollow sounds when knocking on ceramic tiles and falling off of ceramic tiles, cracks in the tiles, efflorescence and damage on joints and leakage of the pool shell itself.

Pool constructions are usually made of waterproof concrete. Due to the complexity of the installation of concrete, the complexity of implementation of working and dilatation joints, filling of holes after removing the formwork, cracking due to shrinkage of concrete etc. The whole concept of waterproof concrete construction is often questionable. In order to avoid uncertainty of sealing we recommend alternative sealing of concrete surfaces with polymer-cement based waterproof compounds. Below we present the complete system of implementation of a pool, which will by correct implementation enable you a carefree and long-term use.

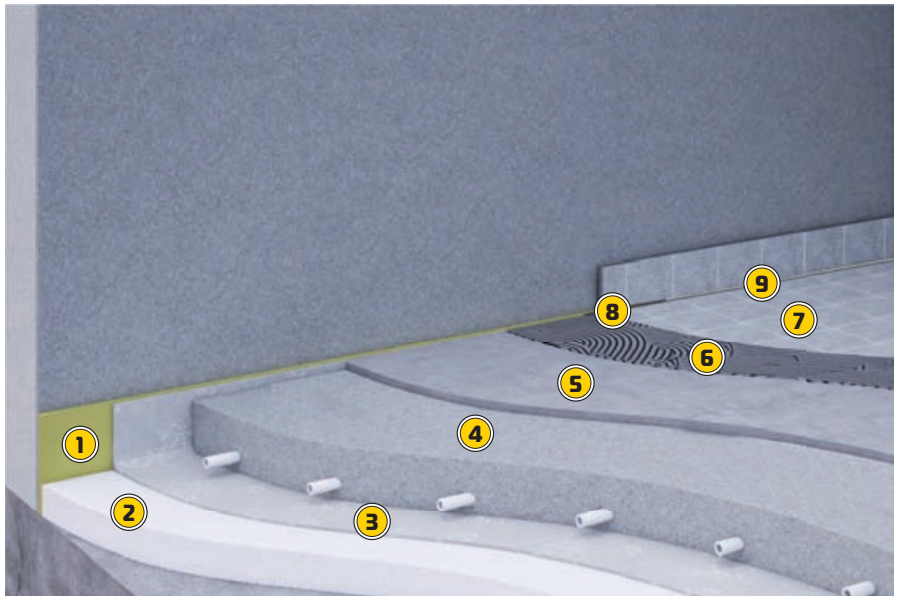
- | | | | | | |
|-----|-------------------------|---|------------------|----|-----------------|
| 1 | KEMA SWELL (05) | 5 | KEMABAND | 9 | KEMAPOX LF |
| 2 | BETONPROTEKT RT | 6 | KEMABAND TACK | 10 | KEMAFLEX PE X10 |
| 3 | BETONPROTEKT RP | 8 | KEMAKOL FLEX 170 | 11 | KEMAFLEX PU |
| 4 7 | HIDROSTOP ELASTIK/VARIO | | | | |



- 1 EDGE BAND
- 2 THERMAL INSULATION
- 3 PVC FOIL
- 4 SCREED WITH UNDERFLOOR HEATING

- 5 LINEA LEVELING COMPOUND
- 6 KEMAKOL FLEX 170
- KEMABOND FLEX 131

- 7 NANOCOLOR
- KEMAPOX ARTCOLOR
- 8 KEMAFLEX PE X10
- 9 KEMASIL



Underfloor heating is a heating system in which the floor takes the role of heating. Due to its positive properties, underfloor heating is becoming more widely used in new buildings.

A fact is that the underfloor heating has to be well planned because for every change of it major work has to be made in the floor and this is not cheap. Therefore underfloor heating is mainly installed in new buildings, rarely in renovation of older buildings. Important in this type of heating is also the selection of materials, which are intended for installation of underfloor heating and to avoid unnecessary mistakes as for instance, to lay on ceramic tiles, which are a good covering for underfloor heating, a thick carpet. It eliminates the good thermal conductivity of the ceramic tiles and blocks the heat transfer from the floor.

In the following we focus on some necessary steps for installing underfloor heating and for further laying of the final covering.

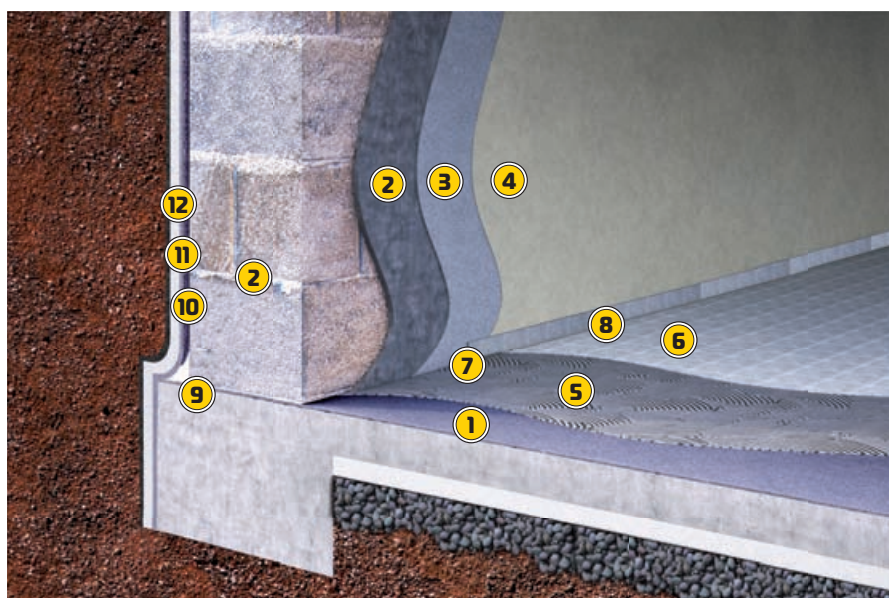
LAYING CERAMICS ON UNDERFLOOR HEATING

SEALING OF NEWLY CONSTRUCTED BASEMENT

Parts of the building which are frequently or constantly exposed to the influence of water or moisture, regardless of its origin, are in construction subject to special treatment under the so-called hydro protection.

This concept is relatively wide and presents a number of technical measures that can eliminate the problem properly and protect the building appropriately. One of the possible measures is hydro insulation, which is typical primarily to deal with objects buried in the ground.

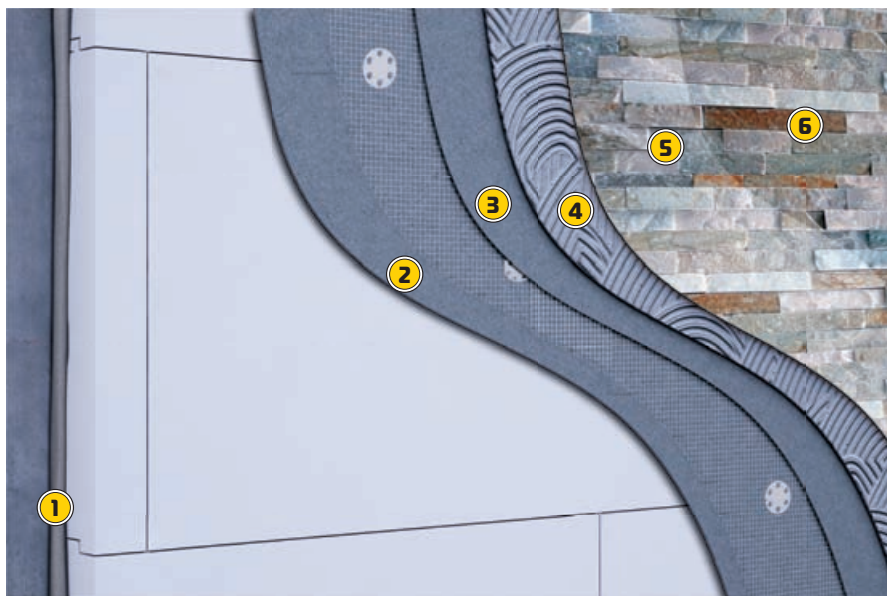
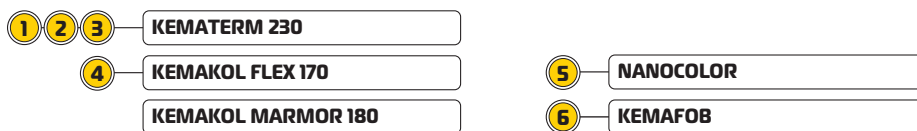
With the help of it we may already during the construction protect the building as well as internal premises against water and moisture. All of this, of course, can be provided with correct installation and the appropriate range of materials, which help us to avoid possible subsequent restoration.



- 1 11 — HIDROSTOP ELASTIK/VARIO
- 2 — KEMAMIX G
- 3 — KEMAMIX F
- 4 — DISPERSION PAINT

- 5 — KEMAKOL RAPID 193
- 6 — NANOCOLOR
- 7 — KEMAFLEX PE X10
- 8 — KEMASIL

- 9 — HIDROSTOP KIT
- 10 — BETONPROTEKT RT
- 12 — KEMATERM 230



Ceramics as final covering are mostly used in sanitary rooms, on terraces/balconies and in other rooms mostly as final covering for walking on. Ceramic coverings and other decorative stone can also be used for numerous technical and aesthetic solutions also when talking about final façade coverings.

This solution has recently been on the rise also in the construction of residential buildings and large buildings (business buildings, residential buildings, schools and other) because it improves the look and design of the building and of course provides lasting protection against external influences.

For all the products in the presented system we have more than 10 year of experience on the Slovene and foreign market.

IMPLEMENTATION OF CERAMIC FAÇADE (decorative stone)

USE OF LEVELLING COMPOUNDS AND INTERIOR PLASTERS ON A BRICK OR AB WALL

Levelling compounds for walls are normally used on concrete surfaces or surfaces with fine plaster after removing formwork and as preparation for painting. The selection of levelling compound depends on the surface. It should be noted that potential moisture in surfaces can cause blistering and peeling in dispersion levelling. Application thickness is normally from 1 to 3 mm, even more in certain instances. Any possible deeper holes should be previously repaired with putty.

All levelled surfaces must be adequately strong without cracks and have a quality adhesion to the surface after finished work. For such results, basic rules have to be followed during implementation. One of such is that levelling compounds are not intended for bonding of cracks, which

LEVELLING OF AB WALL/CEILING

- 1 KEMAGLET G
- 2 KEMAGLET FX
- 3 DISPERSION COLOR



have to be remedied appropriately before the implementation, and surface preparation before implementation of levelling is very important. The surface should be free of dirt, dust, free particles and coating residues, which could prevent quality surface adhesion; the surface should also be appropriately impregnated according to its absorbency.

INDOOR LEVELLING OF BRICK WALL/CEILING

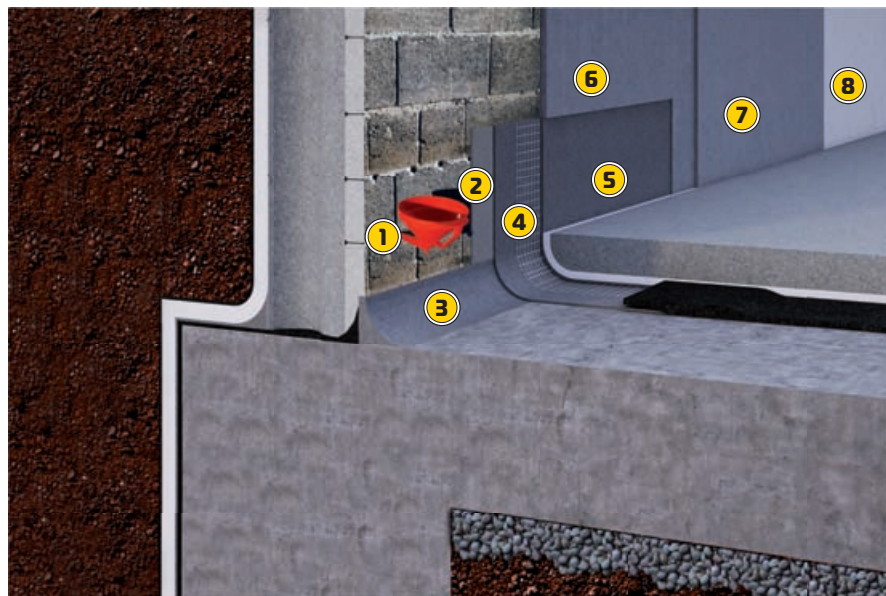
- 1 KEMAMIX G
- 2 KEMAMIX F
- 3 5 KEMAGLET FX
- 4 6 DISPERSION COLOR



- 1 ISOTAL
- 2 HIDROSTOP PENETRAT
- BETONPROTEKT F

- 3 HIDROSTOP KIT
- 4 5 HIDROSTOP ELASTIK/VARIO
- 6 HYDROMENT DRYING PLASTER

- 7 HYDROMENT FINE PLASTER
- 8 VAPOUR-PERMEABLE SILICATE/SILICONE COLOR



When water gets into the basement we must first seek the causes of this phenomenon. The most common causes are: defective horizontal and vertical insulation, incorrect installation, cracks, improper drainage, improper construction design, the use of hollow concrete brick at high groundwater, incorrect details of sealing, etc.

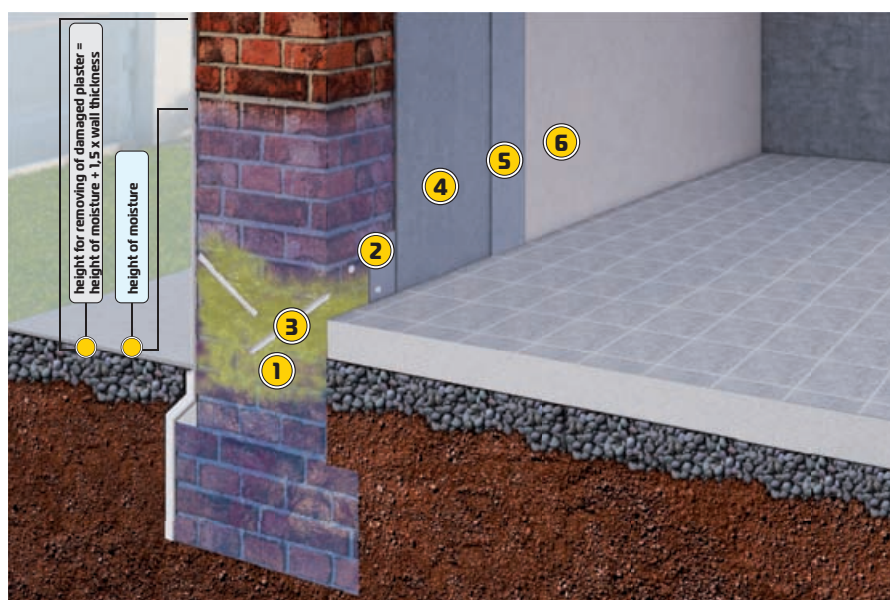
In the event that the external peripheral walls can be uncovered by digging this is the best solution to restore or replace the hydro insulation, but if the building from the outside cannot be uncovered a complete system of sealing on the inside, which we present below has to be made.

SEALING OF BASEMENT (RESTORATION)

RESTORATION OF DAMAGE OWING TO CAPILLARY MOISTURE IN THE GROUND FLOOR

The reason for moistening in the ground floor of buildings without basement is capillary moisture because the hydro insulation is not carried out, is damaged or defectively installed.

Consequences are soon visible in form of dark stains, flaking of leveling compounds and paints, moistening of floors, etc. With blocking coatings and coverings you can only temporarily cover this damage. Accumulation of moisture will only escalate. Therefore we present below one of the possible approaches for restoration of the mentioned problem.



* height for removing of damaged plaster = height of moisture + 1,5 x wall thickness



- 1 KEMASOL
- KEMASOL MICRO
- 2 BETONPROTEKT F

- 3 HIDROSTOP PENETRAT
- 4 HYDROMENT DRYING PLASTER
- 5 HYDROMENT FINE PLASTER

- 6 VAPOUR-PERMEABLE SILICATE/
SILICONE COLOR



- | | | |
|-----|-------------------------|--|
| 1 | HIDROZAT | |
| | HIDROSTOP KIT | |
| 2 | BETONPROTEKT RT | |
| 3 5 | HIDROSTOP ELASTIK/VARIO | 6 |
| 4 | GLASS MESH | 7 |
| | | 8 |
| | | HYDROMENT DRYING PLASTER |
| | | HYDROMENT FINE PLASTER |
| | | VAPOUR-PERMEABLE SILICATE/
SILICONE COLOR |

Moisture is one of the biggest problems of maintaining older buildings. It directly or indirectly influences the degradation of all kinds of materials and constructions. One of the most common and most difficult problems is how to restore damp walls with visible salts on the surface, because these salts during crystallization cause flaking of the color coat and destroy the substrate either plaster or brick, stone or other building material. It is also a serious problem for the construction because it destroys the foundations, walls, floors and internal equipment and reduces the value of the building. Because of capillarity moisture, the temperature of the walls significantly reduces, so in winter you use for heating of wet areas up to 30% more energy than for heating of dry rooms.

If the object is built in an area with increased possibility of damp damage, you may instantly use

restoration plasters instead of ordinary plasters as a preventative measure on all the walls. If we talk about the problem of damp on the existing facility, which is also inaccessible from the outside and the walls are damp due to not existing or damaged external hydro insulation, below we offer the following solutions.



* height for removing of damaged plaster = height of moisture + 1,5 x wall thickness

RESTORATION OF DAMAGE OWING TO CAPILLARY MOISTURE IN A BUILDING WITH BASEMENT – Building inaccessible from outside

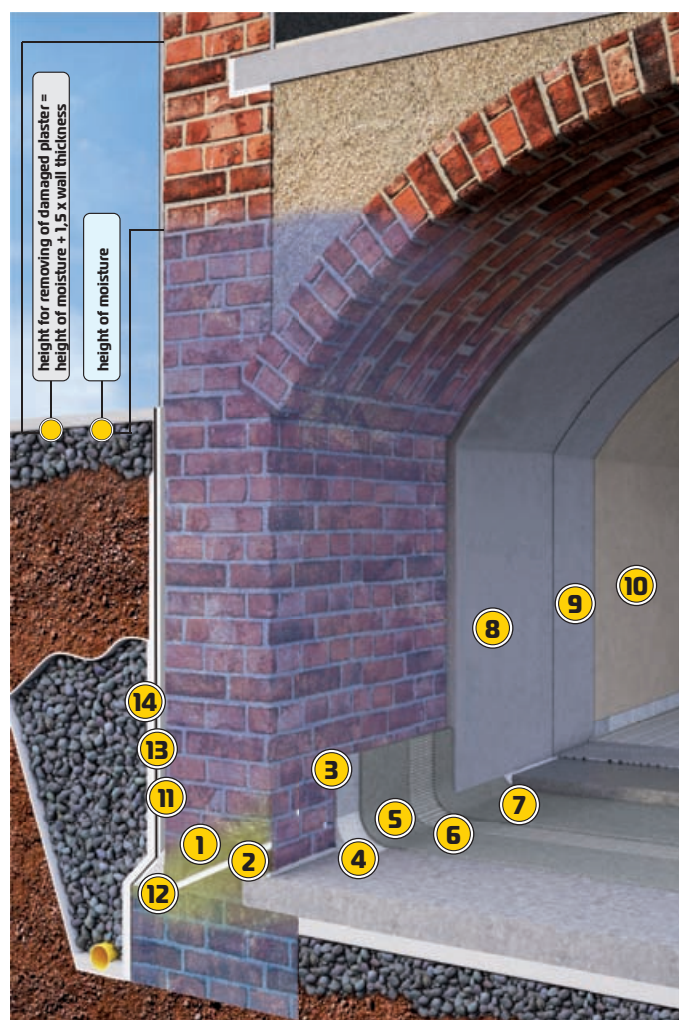
RESTORATION OF DAMAGE OWING TO CAPILLARY MOISTURE IN BUILDING WITH BASEMENT – Building accessible from outside

Damp walls reduce quality of life and greatly endanger health. The whole process related to increased moisture also affects the visual appearance of the building. Consequences of excessive moistening of individual building constructions are reflected in an increase in thermal conductivity, in the development and emergence of mold, corrosion and mechanical damage mainly. Causes of moisture can be several and they are interconnected. If the source of moisture causes have not been identified and eliminated, it is not possible to make permanent restoration

of damage or to find a solution that would prevent their re-emergence. During planning of restoration it is best that the construction is inspected by an expert, who will based on the measured moisture, humidifying causes, construction design and intended use of the premises, prescribe the most appropriate procedure for restoration. In the example below, we describe



in detail the solution for the problem of capillary moisture in the basement when the object is accessible from outside, so that you can beside thorough restoration for renewal inside also carry out extra protection on the outside of the building.



* height for removing of damaged plaster = height of moisture + 1,5 x wall thickness

- 1 KEMASOL
- KEMASOL MICRO
- 2 HIDROSTOP PENETRAT
- 3 BETONPROTEKT RT
- 4 HIDROZAT
- HIDROSTOP KIT

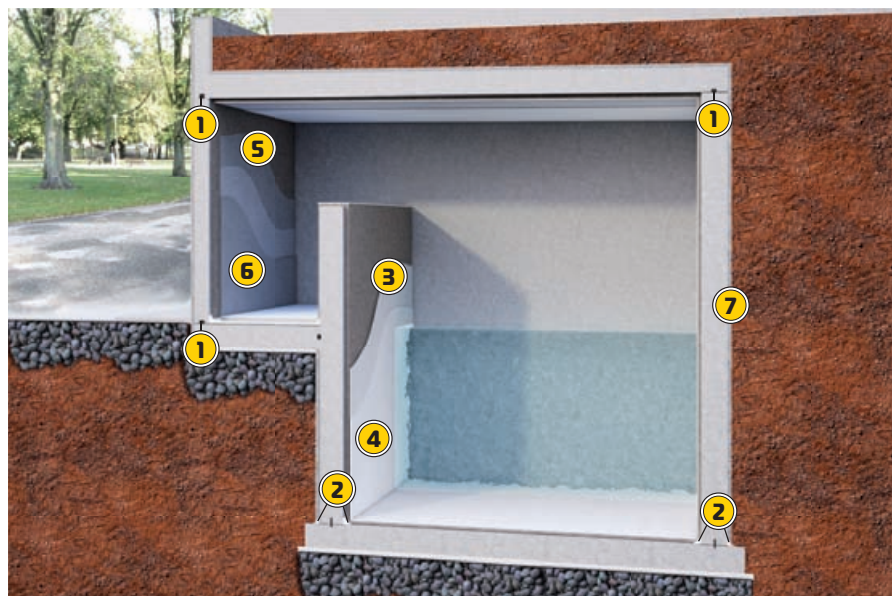
- 5 7 HIDROSTOP ELASTIK/VARIO
- 6 DISPERSION COLOR
- 8 HYDROMENT DRYING PLASTER
- 9 HYDROMENT FINE PLASTER
- 10 VAPOUR-PERMEABLE SILICATE/SILICONE COLOR

- 11 KEMAMIX G
- 12 HIDROSTOP KIT
- 13 HIDROSTOP ELASTIK/VARIO
- 14 KEMATERM 230

- ① KEMA SWELL (05)
- ② HIDROSTOP KIT
- HIDROZAT

- ③ ④ HIDROSTOP VH
- ⑤ ⑥ HIDROSTOP ELASTIK/VARIO

- ⑦ HIDROSTOP PENETRAT



Concrete water reservoirs are due to their location and load very specific so already in the design special attention has to be paid.

The static calculation of the construction itself does not mean that the water reservoir will provide 100% waterproofness, thus details are important, which are both in the design and implementation sometimes a bit ignored. As a rule concrete water reservoirs are constructed on the principle of "white tank", which means that the composition of hardened concrete itself prevents the increased penetration of moisture in concrete.

However, only laboratory concrete composition is not enough, because during installing a series of irregularities may occur. In addition, in the construction it is necessary to provide waterproof working joints by installation of special sealing strips and elements.

CONSTRUCTION OF WATER RESERVOIR

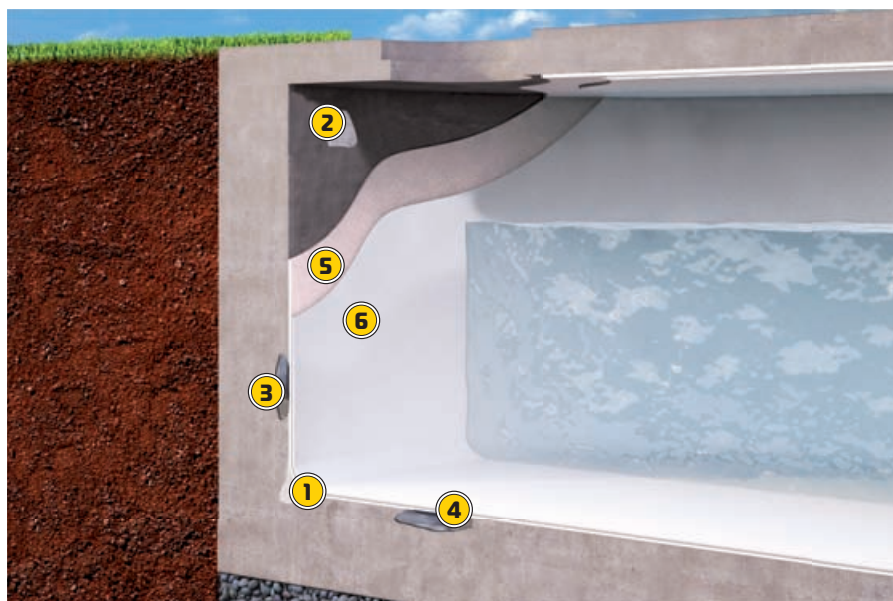
RESTORATION OF WATER RESERVOIR

At engineering constructions, built from waterproof concrete according to the "white tank" system, in practice often occur difficulties like cracks and thus non-sealing of the construction because of concrete shrinkage (e.g. long wall surfaces), working joints due to concrete segregation (e.g. joint of floor slab and wall), pipe penetrations without proper flanges, deficient sealed holes from paneling and deficient or non-qualitative made working joints.

Because of the above mentioned, the additionally needed sealing and the additional protection and increased durability of the construction, in practice are often used waterproof cement-based compounds and coatings for this purpose. Because of the excellent compatibility with concrete, the polymer-cement based waterproof compounds ensure secondary protection of waterproof concrete. In addition to waterproofness they ensure increased resistance of the concrete against aggressive substances from the environment (sulphates,

chlorides, CO₂...) and by this prolong the lifetime of the construction. Other suitable construction in practice are tanks, collecting containers, supporting walls, fundamental and underground concrete constructions and other engineering buildings.

Distinction is made between rigid and elastic waterproof polymer-cement based compounds. The rigid waterproof compounds unlike the elastic do not have the ability to bridge cracks. Therefore they are more suitable for installation on stable monolithic constructions, which are not subject to dynamic influences and which already because of the simple concept of the construction and by this the possible qualitative implementation ensure waterproofness. As already mentioned, they are indispensable at water ingress in buildings, where the area has to be sealed from the inside with appropriate fast-setting compounds. Cement-based waterproof compounds have to be installed in layers of approx. 1 mm, required are min. 2 layers. The final thickness shall not exceed 5 mm. An important characteristic of rigid waterproof compounds in comparison with elastic ones is that they have far more adhesion on mineral substrates and higher water vapor permeability. These are also the parameters for the decision to choose either elastic or rigid waterproof compounds. Rigid waterproof polymer-cement based compounds can be installed also in combination with elastic waterproof compounds, the rigid compounds always have to be installed first and then the elastic waterproof compounds.



- ① HIDROSTOP KIT
- HIDROZAT
- ② HIDROSTOP KIT

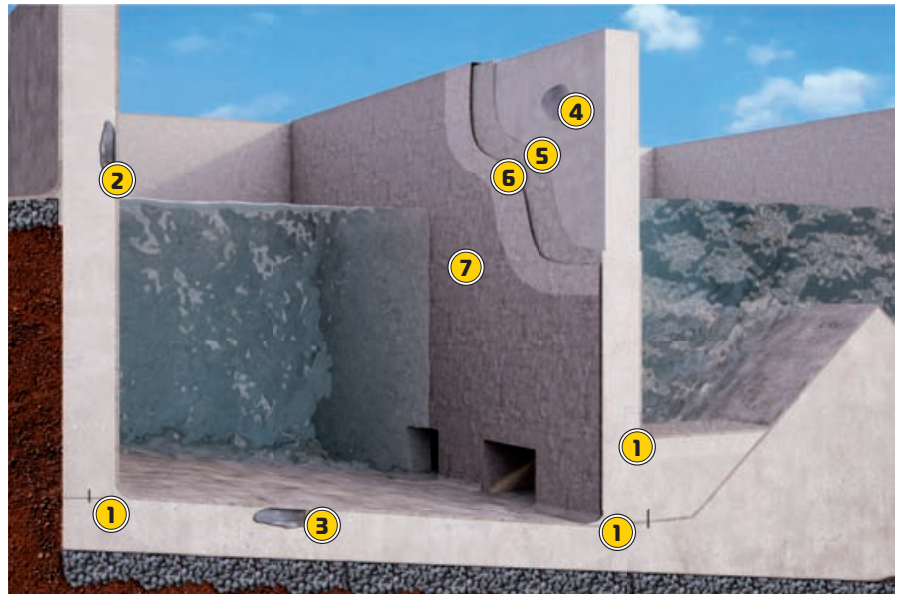
- ③ BETONPROTEKT RT
- ④ BETONPROTEKT RP

- ⑥ ⑤ HIDROSTOP VH

- 1 HIDROSTOP KIT
- HIDROZAT
- 2 BETONPROTEKT RT

- 3 BETONPROTEKT RP
- 4 HIDROZAT MOMENT

- 5 6 HIDROSTOP PENETRAT
- 7 KEMA IMPREGNATOR



A treatment plant is an infrastructure from cleaning of waste water, which is after cleaning returned back in the environment. With physical, chemical and biological processes the water is cleaned to the extent to prevent harmfulness for the environment. The aim of this procedure is the protection against harmful substances contained in the waste water.

Because of the presence of different substances, the materials for appropriate sealing are very important because they have to be resistant to various aggressive substances. Of course we must not ignore the implementation itself and the focus on individual details, for this reason we have to pay attention already during planning and installation of the treatment plant.

The static calculation of the construction itself does not mean that the treatment plant will provide 100% waterproofness. Details of implementation that are often ignored, in addition to the selection of materials are of crucial importance for a carefree and long-term operation of the treatment plant.

RESTORATION OF TREATMENT PLANT

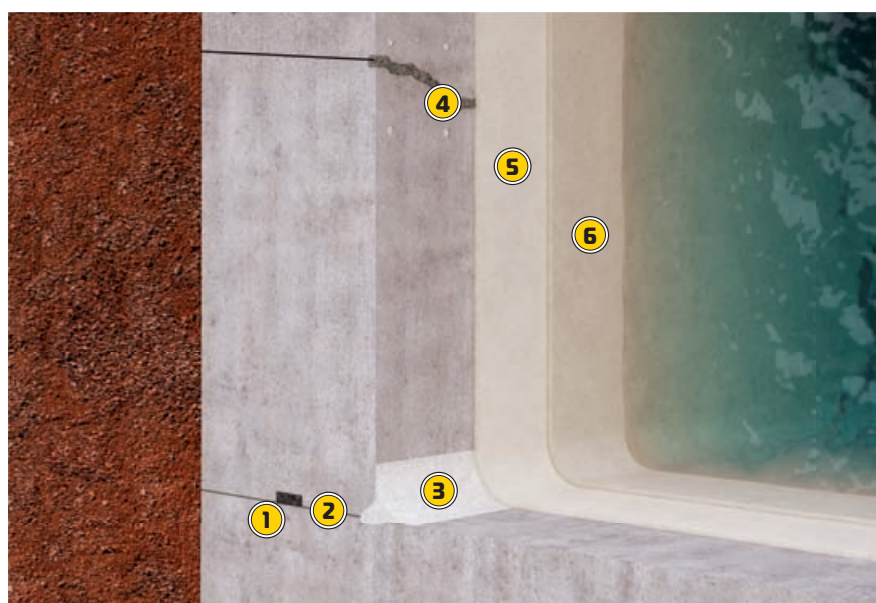
DETAIL OF SEALING OF CONCRETE CONSTRUCTIONS

At implementation of reinforced waterproof concrete constructions, the joints and penetrations through the construction are very important.

In practice we are faced with various unpredictable events during implementation, so we are already during the construction phase often forced to restore our construction. That is why this type of recovery interventions are very similar to those performed in renovations. Most of the presented procedures are also possible to use in new construction as well as in restorations.

DETAIL ON SEALING WITH WATERPROOF COMPOUNDS AND FAST-SETTING MORTARS

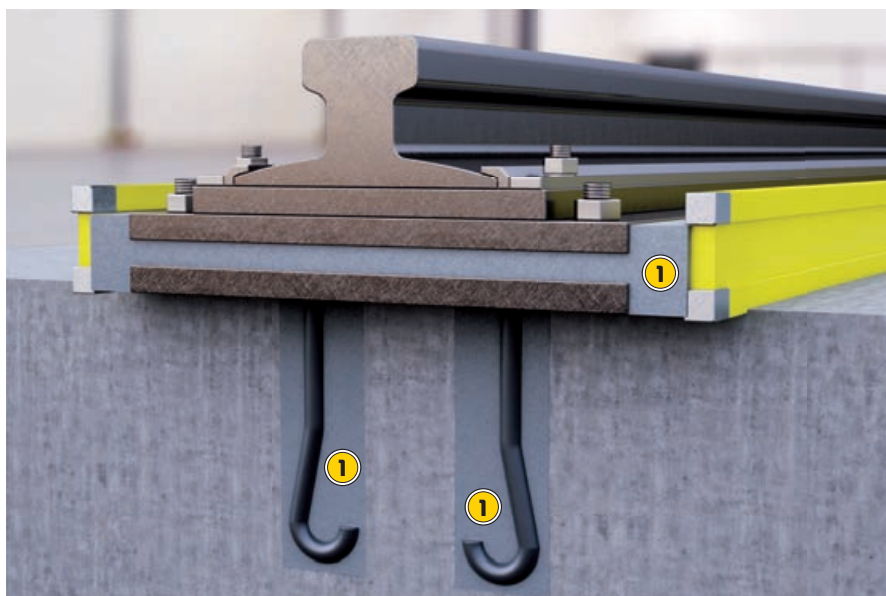
- ① KEMA SWELL (05)
- ② HIDROSTOP PENETRAT
- ③ HIDROSTOP KIT
- ④ HIDROSTOP KIT
- ⑤ HIDROZAT
- ⑥ HIDROZAT MOMENT
- ⑦ HIDROSTOP VH



SEALING OF JOINT BETWEEN PIPE AND CONCRETE

- ⑦ KEMAPOX GRUND 2000 + EPOXY SAND
- ⑧ KEMA MASTIC WA
- ⑨ HIDROSTOP ELASTIK/VARIO





For grouting of plates of machines, crane trails, grouting of anchors and filling of empty spaces on joints of individual construction elements, special prepared expansive cement- based compounds can be used.

The compounds can be prepared in different grain sizes, depending on the size of the element, which has to be grouted. In general, the diameter of max. grain shall not exceed $\frac{1}{4}$ of the size of the section to be grouted.

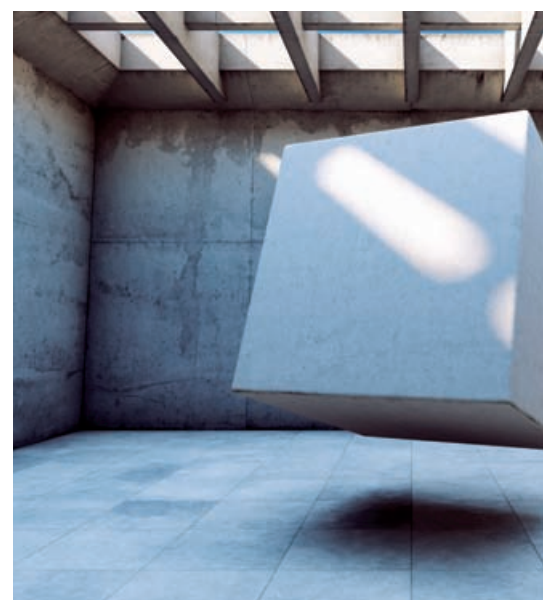
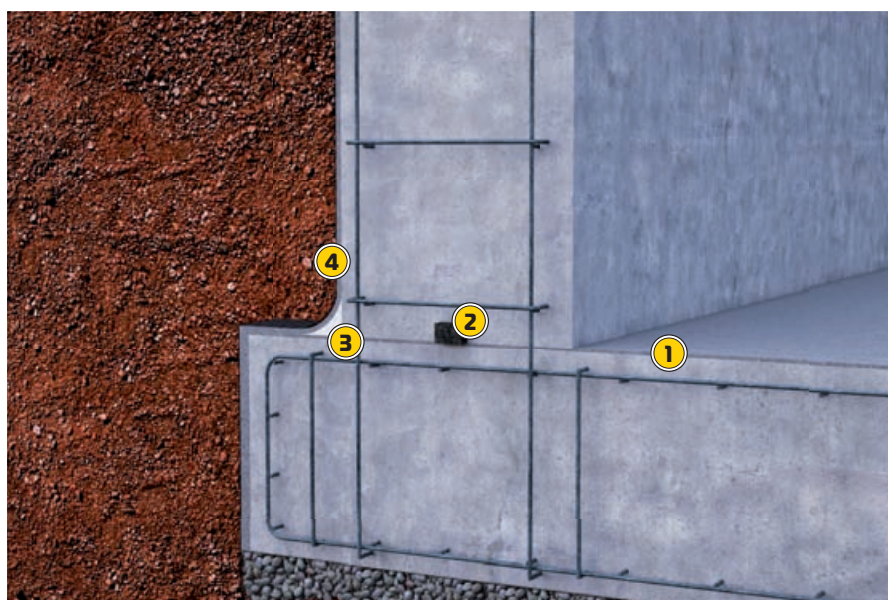
The expansive cement- based compound for grouting can be used, where gas - forming expansion of mortar, reduced shrinkage and high initial and final bonding strength between the concrete substrate and other steel elements are desired.

GROUTING/ANCHORING OF CRANE TRACK

IMPLEMENTATION OF JOINT BETWEEN HORIZONTAL AND VERTICAL HYDRO INSULATION

The detail for implementation of vertical and horizontal hydro insulation between foundation and basement walls by assuring 100 % waterproofness is of essential importance for permanent protection of the construction. In most cases no special attention is paid to this, until problems arise. These can be: moistening of walls – capillary rising of moisture, groundwater ingress and damage to floors and walls.

In the given example we are talking about the alternative polymer- cement based hydro insulation in comparison with the classic bituminous insulation, because its mayor advantages are 100 % waterproofness, increased resistance to aggressive substances (salts, sulphates, chlorides, CO₂), resistance to negative and positive water pressure, UV and frost resistance, bridging of cracks at using flexible polymer- cement based compounds, etc. Such hydro insulation can be applied on concrete with compressed structure of the quality at least C16/20, on aerated concrete, gypsum- cardboard panels, brick and concrete walls, walls built with cement or lime- cement based mortar with a coating of at least 10 mm and planed cement or lime- cement based plaster.



1 4 HIDROSTOP ELASTIK/VARIO

2 KEMA SWELL (05)

3 HIDROSTOP KIT
HIDROZAT

1 BETONPROTEKT RT

2 BETONPROTEKT RP

3 BETONPROTEKT F



At implementation of concrete constructions, local damage due to segregation during installation, faulty paneling/removing of paneling and other unforeseen impacts can occur. In such cases these surfaces have to be restored before further work. The use of conventional prepared mortars on the building sites has in practice proved inadequate because of

the difficult control and assurance of constant same composition but mainly due to uncontrolled shrinkage and crack limitation. For this purpose, it is advisable to use ready mix industrially prepared mortars.

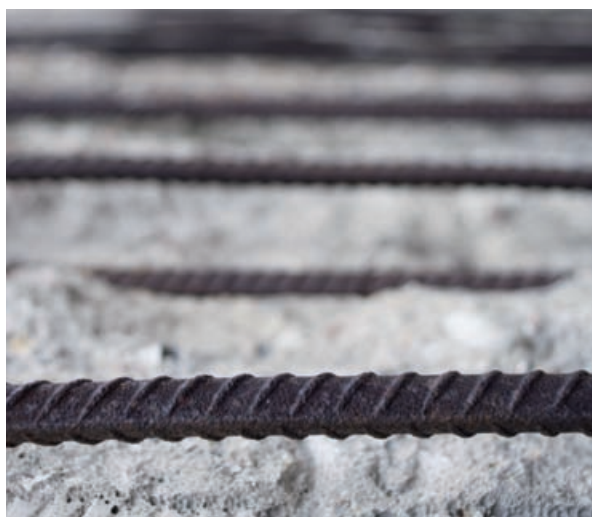


RESTORATION OF NEW DAMAGED CONCRETE

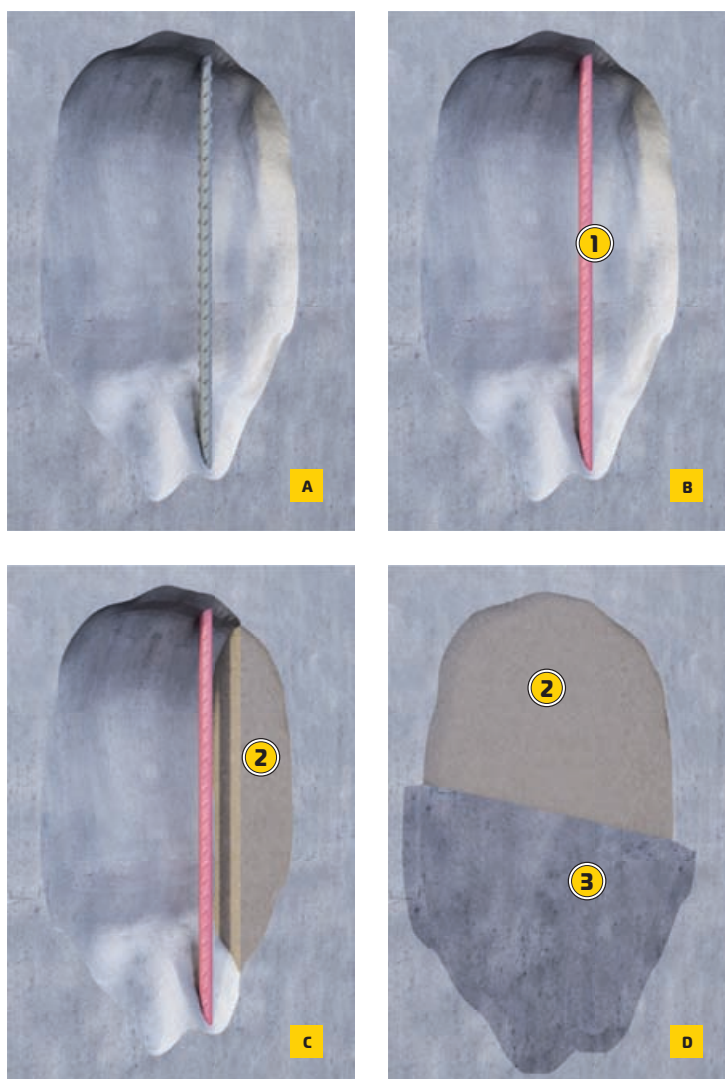
RESTORATION OF OLD DAMAGED CONCRETE

Reinforcement in concrete does not corrode, until it is covered with a sufficient thickness of highly alkaline layer of concrete. This is especially in older buildings often achieved only in theory. In practice, reinforced concrete constructions often have hair-like cracks after

implementation, very often the protective layers are locally too thin. All this, together in combination with mechanical loads, moisture, freezing and salt, carbon dioxide from the air and other external influences may lead to carbonization of concrete, corrosion of reinforcement, and later to endangering the stability of the structure.



Such damage can be easily and qualitatively restored with the prepared polymer-cement based restoration mortars, which we describe in the following steps.



1

BETONPROTEKT K2

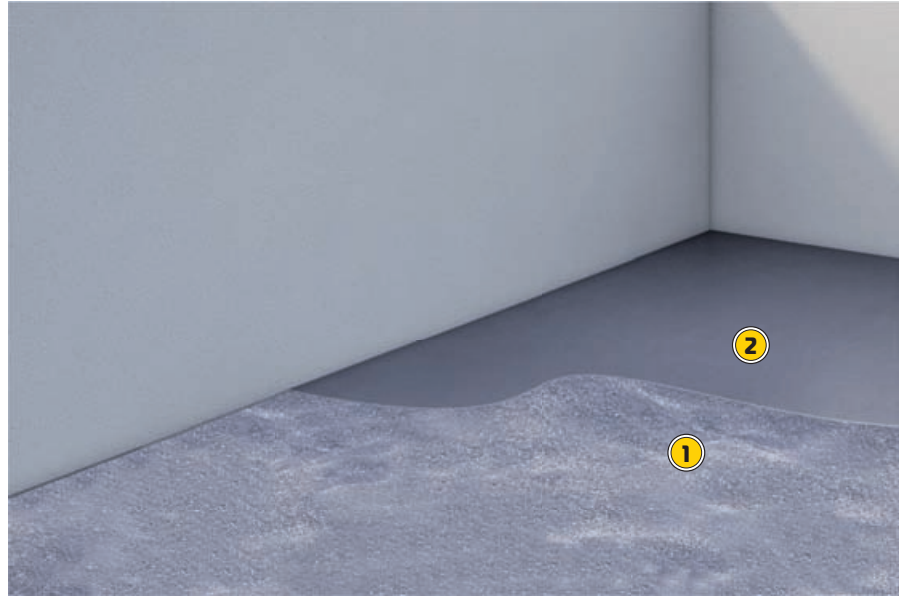
2

BETONPROTEKT RT

3

BETONPROTEKT F

- 1 FRESH CONCRETE DUSTED WITH TAL M COATING
- 2 PLANNED TAL M INDUSTRIAL FLOORING



A qualitative industrial floor, which is among the construction elements subject to the highest loads, has to have beside strength also numerous other properties. If the industrial floor should fully meet its purpose, it has to carry the load on the substrate while remaining even and undamaged.

During installation of industrial floors TAL M from Kema proper timing of work is of crucial importance. After installation and leveling of concrete it has to be observed closely to catch the right moment to start the installation and smoothing of the hard aggregate dry shake or mortar.

The time between concrete leveling and installation of TAL M can vary greatly according to atmospheric conditions. In the following is the description of the installation of the hard aggregate mortar coating TAL M.

INSTALLATION OF INDUSTRIAL FLOOR

REPAIR AND CEMENT-BASED INDUSTRIAL FLOORS

Cement-based industrial floors are daily exposed to various loads and are one of the most exposed elements of each building. Because these surfaces are very frequently used, usually they are given minimal or no maintenance.

Very common and standard damages are mainly on transport routes of dilatation / working joints where due to the rheology of concrete the joints need time before they finally "open", usually also roll up. Because of the lack of maintenance

and the traffic load the edges of joints crumble, individual fields can due to the rolling-up of the joints also break.

Another type of damages are local breaking-offs of the top layer due to local striking damages in combination with horizontal shear loads due to traffic loads. The third typi-

REPAIR TYPE 1 – LIGHT LOAD

- ① LINEA 820 M
- ② LINEA 830 SL
- ③ KEMAPOX FINAL 6500 AQUA

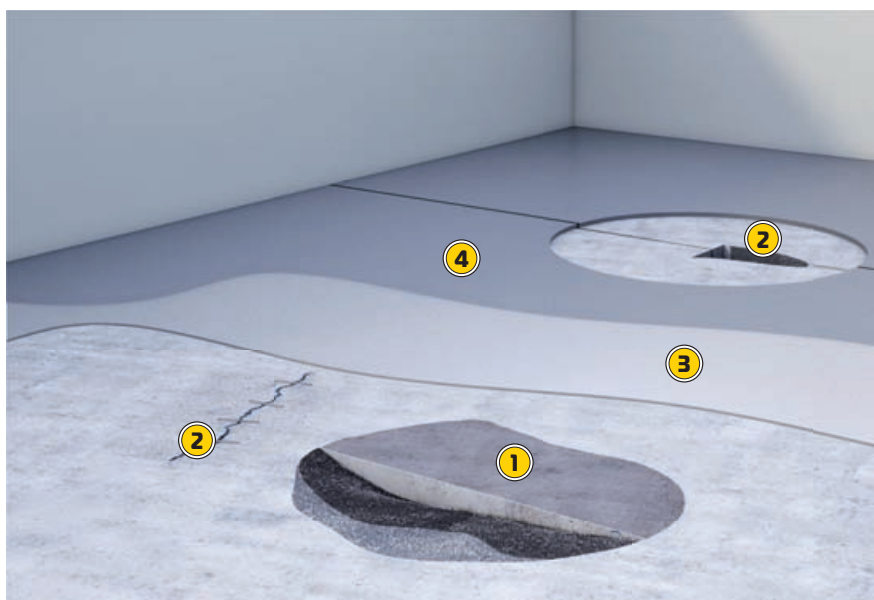
cal types of damage are potential 'wild' cracks that have occurred as a result of lack of care or other unforeseen impacts.

Damaged industrial floor with this can quickly become a distracting element in everyday use or even hinder the production / storage process. Renovation of the floor should therefore be fast and rational.

We present two typical examples of renovation according to the described problem.

REPAIR TYPE 2 – HIGHER LOAD

- ① ③ TAL M KORUND 10
- KEMA NONSHRINK
- ② KEMAPOX FILL 1000
- ④ KEMA IMPREGNATOR POWDER



- ① KEMAPOX FILL 1000
- ② EPOXY SAND ES 0,3 - 0,8



Figure 1



Figure 3



Figure 2



Figure 4

Figure 1: Example of crack

Figure 2: Chamfering with angle grinder

Figure 3: Inserting steel bars and filling with epoxy resin

Figure 4: Strewing with quartz sand EPOXY SAND ES

Cracks are an inevitable occurrence in concrete works. We can speak of two causes of cracks in concrete or screed. First caused by plastic shrinkage and plastic settling of concrete at the stage of curing while others occur in cured concrete due to shrinkage, temperature tension, external influences, bad implementation, overload, incomplete details etc.

CONNECTING CRACKS IN FLOORS

INSTALLATION OF EPOXY FLOOR IN HOME GARAGE

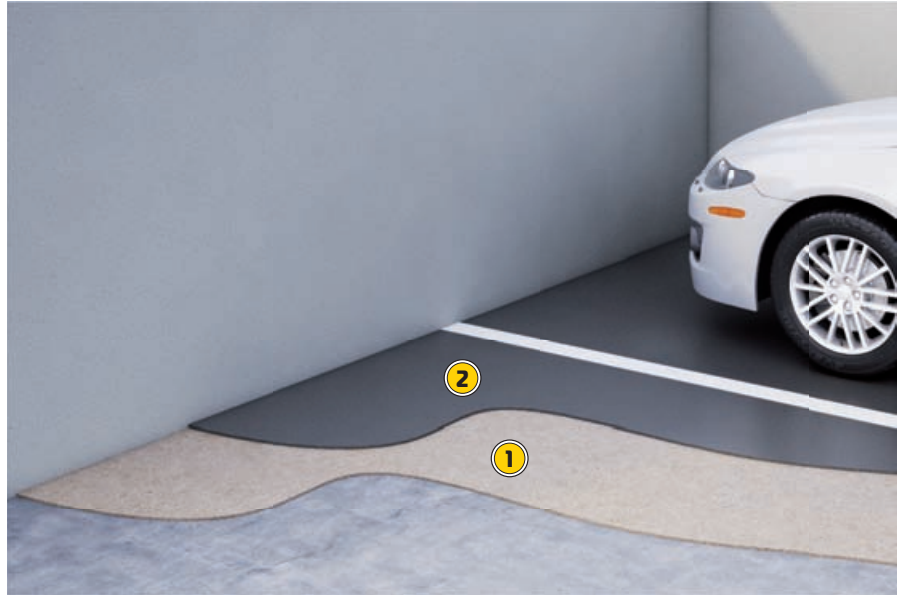
Home garage, beside its basic purpose for car parking, also offers alternative options of use, such as a place for a workshop or similar.

Epoxy coatings are intended for both basic non-complex surfaces and for the most complex floors, because they provide a very appropriate alternative to other final coverings in the garage.

Kemapox Final 6500 Aqua is used for color protection of all mineral floor and wall surfaces, such as hydraulically bound materials (concrete, cement ester, cement plaster, extended lime-cement plaster, gypsum plaster, gypsum plasterboards), mineral-bound materials (anhydrite and magnesite esters) and other materials (ceramic tiles, marble, etc.). It offers a wide range of color tones and provides right quality solutions for many purposes. Its installation is fast and simple, but the guidelines on surface preparation must be followed.



- 1 KEMAPOX GRUND 2000
- 2 KEMAPOX FINAL 6000



At a time when cities are increasingly closing for traffic and are arranging their center, the parking garages even more come to the fore as an easy and safe parking of vehicles, while also reducing the saturation of urban areas. As with all facilities a parking garage also requires comprehensive planning and a qualitative treatment of the surface, in this way its optimal purpose is ensured.

The car parks are faced with a high frequency of traffic and various chemical loads ranging from salt to oil stains. Therefore, we must especially pay attention to the substrate preparation and the selection of the correct composition of the epoxy floor.

For this we need to ensure an adequate level against slipperiness, which is determined by the grain size of quartz sand, which we mix in and strew on the floor during installation.

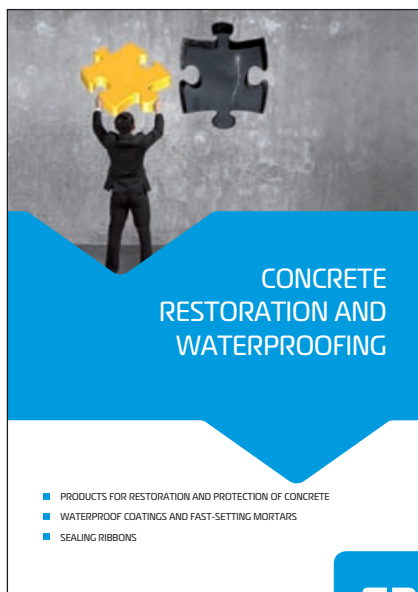
INSTALLATION OF EPOXY FLOOR IN PARKING GARAGE – MEZZANINE



TILING

- ADHESIVES FOR TILES, NATURAL STONE, GAS CONCRETE
- JOINT GROUTING COMPOUNDS
- SEALING COMPOUNDS
- PRIMERS AND COATINGS
- WATERPROOF COATINGS AND SEALING RIBBONS

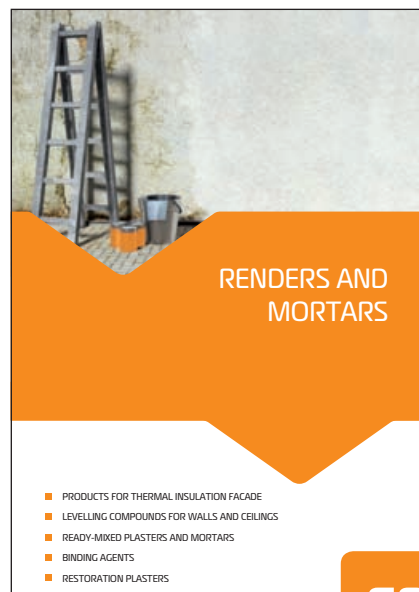
39



CONCRETE RESTORATION AND WATERPROOFING

- PRODUCTS FOR RESTORATION AND PROTECTION OF CONCRETE
- WATERPROOF COATINGS AND FAST-SETTING MORTARS
- SEALING RIBBONS

53



RENDERS AND MORTARS

- PRODUCTS FOR THERMAL INSULATION FACADE
- LEVELLING COMPOUNDS FOR WALLS AND CEILINGS
- READY-MIXED PLASTERS AND MORTARS
- BINDING AGENTS
- RESTORATION PLASTERS

69



FLOORING

- PRIMERS AND COATINGS
- FLOOR-LEVELLING COMPOUNDS
- INDUSTRIAL FLOORS
- EPOXY AND POLYURETHANE FLOORING AND COATING

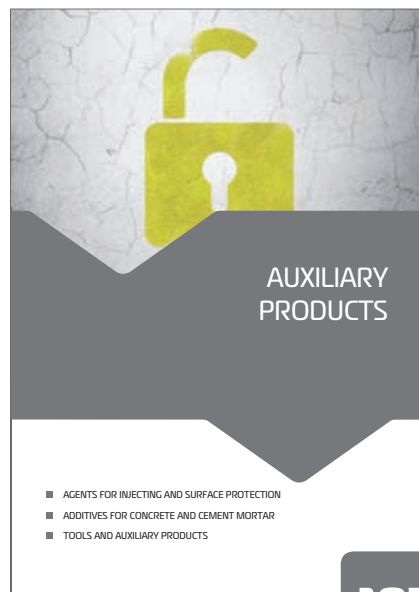
77



QUARTZ SAND

- CONSTRUCTION
- SPORT AND RECREATION
- GARDEN
- WATER FILTRATION
- INDUSTRY

95



AUXILIARY PRODUCTS

- AGENTS FOR INJECTING AND SURFACE PROTECTION
- ADDITIVES FOR CONCRETE AND CEMENT MORTAR
- TOOLS AND AUXILIARY PRODUCTS

107





TILING

- ADHESIVES FOR TILES, NATURAL STONE, GAS CONCRETE
- JOINT GROUTING COMPOUNDS
- SEALING COMPOUNDS
- PRIMERS AND COATINGS
- WATERPROOF COATINGS AND SEALING RIBBONS

TILING

ADHESIVES FOR TILES, NATURAL STONE, GAS CONCRETE

**KEMABOND 120****Ceramic tile adhesive for indoor and outdoor use**

Cement-based adhesive with reduced slip for indoor and outdoor laying of tiles, layer thickness of 3-5 mm. For laying ceramic, mosaic, natural stone and other types of tiles on floor and wall surfaces.

Consumption: approx. 1.4 kg/m² per mm of thickness

**25/1**

48 bags/pallet

ID: 03155

**5/1**

6 bags/cardboard box

30 cardboard boxes/pallet

ID: 00543

**WHITE****KEMABOND 121****White ceramic tile adhesive of CIT class**

White cement-based and polymer-enriched adhesive of CIT class for ceramic tiles, layer thickness 3-5 mm. For laying outdoor and indoor ceramic tiles, mosaic, natural stone and other types of tiles, on floor and wall surfaces.

Consumption: approx. 1.4 kg/m² per mm of thickness

**25/1****ON ORDER**

48 bags/pallet

ID: 03026

NEW**KEMAGRES****Universal adhesive for applying granitogres tiles**

High-performance cement-based adhesive with reduced slip and extended open time for laying tiles in the layer with thickness of 3-5 mm. Suitable for applying ceramic and stone with low water absorption.

Consumption: approx. 1.4 kg/m² per mm of thickness

**25/1**

48 bags/pallet

ID: 03154





KEMALASTIC

Elastic dispersion for the improvement of cement-based adhesives

Elastic dispersion for the improvement of cement-based adhesives. By adding the KEMALASTIC dispersion to the KEMABOND 120 or KEMAGRES adhesives, a flexible adhesive with improved properties with C2 TE class and "S2" flexibility according to the standard SIST EN 12004:2007 is formed. This highly deformable adhesive is suitable for special systems of adhesion of ceramics, mosaic tiles, granitogres tiles, artificial and natural stone onto especially demanding surfaces, where a limited deformability is expected.

Preparation: 4 l of KEMALASTIC + 3.5-4 l of water + 25 kg of KEMABOND 120/KEMAGRES

Consumption: depending on the substrate, floor covering size and application method



10/1

60 plastic cans/pallet

ID: 00499



1/1

8 plastic cans/cardboard box
72 cardboard boxes/pallet

ID: 00497



KEMABOND FLEX 131

Flexible adhesive

Flexible, high-performance thin-layer adhesive for coverings, layer thickness of 3-5 mm. Suitable for laying of ceramic tiles, mosaic tiles, new tiles over old tiles, natural and artificial stone, clinker tiles, for adhesion on underfloor heating, gypsum-cardboard panels and all other common construction surfaces.

Consumption: approx. 1.4 kg/m² per mm of thickness



25/1

48 bags/pallet

ID: 03156



KEMAKOL FLEX 170

Flexible ceramic tile adhesive

Flexible, high-performance cement-based adhesive with reduced slip and extended open time for indoor and outdoor laying of essentially all types of floor and wall ceramic and glass coverings as well as stone coverings in the layer thickness of 3-5 mm. Especially suitable for installation of new tiles over old tiles, heavy wall and floor coverings, ceramic tiles in swimming pools, clinker tiles, for adhesion on underfloor heating, gypsum-cardboard panels and cast asphalt substrates (indoors).

Consumption: approx. 1.4 kg/m² per mm of thickness



25/1

48 bags/pallet

ID: 03153



5/1

6 boxes/cardboard box
30 cardboard boxes/pallet

ID: 03999

TILING

**KEMA STARLIGHT FLEX PREMIUM****Universal light flexible adhesive**

Light, flexible high-performance cement-based adhesive with reduced slip and extended open time and long workability time for floor and wall installation of all types of ceramic, glass and stone coverings in layer thickness of 1-15 mm onto concrete, plaster, screed, clinker, light-weight concrete and cellular concrete outdoors and indoors, suitable for laying on existing tiles as well as on underfloor and wall heating.

**17,5/1**

56 bags/pallet

ID: 00970

Consumption: approx. 1 kg/m² per mm of thickness**KEMAKOL MARMOR 180****White flexible adhesive for ceramic tiles and marble**

Flexible, high-performance cement-based decorative white adhesive with reduced slip and extended open time for laying indoor and outdoor wall and floor coverings, layer thickness of 3-5 mm. Especially suitable for adhesion of transparent ceramics, white marble, for special systems of adhesion demanding white adhesive, for installation of new tiles over old tiles, for adhesion on underfloor heating and gypsum-cardboard panels.

**25/1**

48 bags/pallet

ID: 03005

Consumption: approx. 1.4 kg/m² per mm of thickness**KEMAKOL MARMOR 181****White flexible middle-bed adhesive**

Flexible, high-performance cement-based decorative white adhesive with reduced slip and extended open time for laying indoor and outdoor wall and floor coverings, layer thickness of 3-10 mm. Especially suitable for adhesion of transparent ceramics, white marble, for special systems of adhesion demanding white adhesive, for installation of new tiles over the old tiles, for adhesion on underfloor heating and gypsum-cardboard panels.

**25/1**

48 bags/pallet

ID: 03006

Consumption: approx. 1.4 kg/m² per mm of thickness

TILING

KEMA

C2F
S1

FAST-SETTING

S1

**KEMAKOL RAPID 193****Fast-setting flexible adhesive for large floor tiles**

Fast-setting flexible high-performance cement-based adhesive for laying of coverings in layer thickness of 3-10 mm. For adhesion of large floor coverings, heavy ceramic floor tiles, clinker, natural and artificial stones, gres porcelain floor tiles, for adhesion of floor coverings onto underfloor heating and cast asphalt substrates (indoor), for indoor and outdoor use on floor surfaces exclusively.

Consumption: approx. 1.5 kg/m² per mm of thickness



25/1

48 bags/pallet

ID: 03009



5 to 15 mm

**KAMENOL****Stone laying mortar**

Middle-bed cement-based mortar for laying of coverings with strongly profiled back or uneven thickness. Suitable for outdoor and indoor laying of stone, stone tiles, clinker, terracotta tiles and mosaic with layer thickness of 5-15 mm.

Consumption: approx. 14 kg/m² with layer thickness of 10 mm



25/1

48 bags/pallet

ID: 00517

RG

R2T

**KEMAPOX LF****Acid-resistant epoxy adhesive and joint grouting compound**

Two-component acid-resistant epoxy adhesive and joint grouting compound for joints with 3-10 mm width. Suitable for adhesion or grouting of wall and floor ceramic and similar tiles. Suitable for food and chemical industry, for protection of tailing ponds, in hospitals, for swimming pools and sanitation, terraces and balconies, underfloor heating.

Available colours: E10 - grey, E60 - white.



Consumption: 0.6-1.4 kg/m² for adhesion of tiles (1 mm of thickness);
0.4-1.2 kg/m² for grouting, depending on depth and width of joints

5/1

4,62 kg of component A +

0,38 kg of component B

100 buckets/pallet

**E10 grey**

ID: 06772

**E60 white**

ID: 06773

TILING

JOINT GROUTING COMPOUNDS

CG2



NEW COLOR 05 and 07



NANOCOLOR

High-performance flexible cement-based grouting compound (CG2, SIST EN 13888) for joints of 2-15 mm width

Grouting compound for 2-15 mm wide joints, suitable for grouting of indoor and outdoor wall and floor coverings of ceramics, granitogres tiles, glass and marble mosaic, clinker, natural and artificial stone, fire-clay ceramic, for terraces, balconies, screeds with underfloor heating and swimming pools. Special hydrophobic additives made with nano-technology give the compound its permanent in-depth water-repellence, ensuring it a high wear resistance.

Consumption: depending on the joint width: see Table on page 45.

COLOR

N05 - silver grey

N07 - light grey

N10 - grey

N15 - medium grey

N20 - medium grey

N30 - anthracite grey

N40 - light brown

N50 - brown

N60 - white

N70 - manhattan

N75 - vanilla

N80 - beige

N85 - almond

N90 - sahara

N100 - terracotta

N105 - yellow

N110 - pink

N115 - ice blue

N120 - light blue

N130 - blue

N135 - green

N140 - light green

2/1

ID: 03632

ID: 03633

ID: 03500

ID: 03501

ID: 03502

ID: 03503

ID: 03504

ID: 03505

ID: 03506

ID: 03507

ID: 03508

ID: 03509

ID: 03510

ID: 03511

ID: 03512

ID: 03513

ID: 03514

ID: 03515

ID: 03516

ID: 03517

ID: 03518

ID: 03519

5/1

ID: 03630

ID: 03631

ID: 03570

ID: 03571

ID: 03572

ID: 03573

ID: 03574

ID: 03575

ID: 03576

ID: 03577

ID: 03578

ID: 03579

ID: 03580

ID: 03581

ID: 03582

ID: 03583

ID: 03584

ID: 03585

ID: 03586

ID: 03587

ID: 03588

ID: 03589

25 (5x5)/1

ID: 03526

ID: 03553

ID: 03531

ID: 03532

N10 - grey

N60 - white

2/1

8 buckets/cardboard box

20 cardboard boxes/pallet

5/1

6 boxes/cardboard box

30 cardboard boxes/pallet

25 (5x5)/1

24 cardboard boxes/pallet

N05 - silver grey

N07 - light grey

N15 - medium grey

N20 - medium grey

N30 - anthracite grey

N40 - light brown

N50 - brown

N70 - manhattan

N75 - vanilla

N80 - beige

N85 - almond

N90 - sahara

N110 - pink

N140 - light green

2/1

8 buckets/cardboard box

20 cardboard boxes/pallet

5/1

6 boxes/cardboard box

30 cardboard boxes/pallet

25 (5x5)/1 (N15,N70)

24 cardboard boxes/pallet

N115 - ice blue

N120 - light blue

N130 - blue

N135 - green

2/1

8 buckets/cardboard box

20 cardboard boxes/pallet

5/1

6 boxes/cardboard box

30 cardboard boxes/pallet

N100 - terracotta

N105 - yellow

2/1

8 buckets/cardboard box

20 cardboard boxes/pallet

5/1

6 boxes/cardboard box

30 cardboard boxes/pallet

		05 SILVER GREY	07 LIGHT GREY	10 GREY	15 MEDIUM GREY	20 DARK GREY	30 ANTHRACITE GREY	40 LIGHT BROWN	50 BROWN	60 WHITE	70 MANHATTAN	75 VANILLA	80 BEIGE	85 ALMOND	90 SAHARA	100 TERRACOTTA	105 YELLOW	110 PINK	115 ICE BLUE	120 LIGHT BLUE	130 BLUE	135 GREEN	140 LIGHT GREEN
NANOCOLOR	N	○	○	○	○	○	○	○	○	○	○	○	○	○	○	○	○	○	○	○	○	○	○
KEMASIL	S	○	○	○	○	○	○	○	○	○	○	○	○	○	○	○	○	○	○	○	○	○	○
KEMAPOX LF	E			○						○													
KEMAPOX ARTCOLOR	A				○					○													

For technical reasons (printing) the colours do not match exactly those of hardened grouting compounds. The colour nuances can vary from the original sample due to various negative influences during preparation, installation and curing of the grouting compound or silicone. If the colour nuance of the cured grouting compound or silicone is of importance, it is necessary to test the compound on a small, inconspicuous surface under the given installation conditions.

TILING

KEMA

Ceramic tiles

joint width (mm)	3	5	2	5	3	5	2	3	5	5	20	3	5	2	2	3	3	3	5	2	5	5	3	2	3	2
joint depth (mm)	3	6	8	10	7	7	7	7	8	8	6	8	8	8	8	8	10	8	8	8	8	10	10	10	10	10
tile length (cm)	5	15	15	15	20	20	20	20	20	20	25	25	25	25	30	30	30	30	30	33	33	33	40	40	60	90
tile width (cm)	5	20	33	60	20	20	25	25	25	50	10	40	40	45	30	30	30	60	30	33	33	45	40	120	60	45
consumption (kg/m ²)	0,5	0,5	0,2	0,6	0,3	0,5	0,2	0,3	0,5	0,4	2,5	0,2	0,4	0,1	0,2	0,2	0,2	0,2	0,4	0,1	0,4	0,3	0,2	0,1	0,1	0,1

Ceramic clinker tiles

joint width (mm)	5	10	5	10	5	10	10	10	10	10
joint depth (mm)	12	12	18	18	13	13	13	10	30	30
tile length (cm)	24	24	24	24	25	25	25	30	30	40
tile width (cm)	12	12	24	24	6,5	6,5	25	30	45	40
consumption (kg/m ²)	1,12	2,25	1,12	2,25	1,89	3,78	1,56	1,00	2,50	2,25

Mosaic tiles

joint width (mm)	2	2	2	2	3	5	1,5	2	1,5	2	1,5	2	1,5	2	1,5	2	1,5	2
joint depth (mm)	5	7	8	5	5	5	4	4	10	10	4	4	10	10	8	8	8	8
tile length (cm)	2,5	2,5	2,5	5	10	10	1	1	1	1,5	1,5	1,5	1,5	1,5	1,5	1,5	1,5	1,5
tile width (cm)	2,5	2,5	2,5	5	10	10	1	1	1	1,5	1,5	1,5	1,5	3	3	3	3	3
consumption (kg/m ²)	1,2	1,7	1,9	0,6	0,4	0,7	1,4	2,4	4,5	6,0	1,2	1,6	3,0	4,0	1,8	2,4	2,4	2,4



KEMAPOX ARTCOLOR

Revolutionary easy to clean 2 parts acid resistant epoxy joint grouting and adhesive compound with many exclusive decoration effects

2-component acid-resistant epoxy adhesive and joint grouting compound, for 2-15 mm wide joints. For adhesion and joint grouting of porcelain tiles, clinker, metallic mosaic, vitreous mosaic, wood, natural stones, reconstituted stones, cobblestones, and glass blocks, onto floor and wall in interiors and exteriors. Suitable for applications where the surfaces are exposed to aggressive chemical substances e.g. food factories and chemical industry. It is also recommended for grouting bathrooms, shower cubicles, swimming pools and tanks, containing thermal or brackish water, terraces and balconies, underfloor heating and kitchen counter tops.

2,5/1

2,31 kg of component A +

0,19 kg of component B

175 buckets/pallet

 ID: 06776 **A15 - medium grey**

 ID: 06777 **A20 - dark grey**

 ID: 06778 **A30 - anthracite grey**

 ID: 06775 **A60 - white**

Consumption: approx. 1,6 kg/m² for adhesion with using trowel notch size of 4 mm; for grouting: see table

ARTCOLOR ADDITIVES

Additive for special effect

The ARTCOLOR ADDITIVE, if mixed with the two-part epoxy mortar KEMAPOX ARTCOLOR as a third component, give the grouting an unique and exclusive effect without altering the existing easy to clean product feature.



3 831009 467924

1x75 g plastic bucket
GOLD

ID: 06792

Consumption: Additive is available separately, in pre-measured packages ready to use in each 2,5 kg KEMAPOX ARTCOLOR bucket.

3 831009 467900

1x75 g plastic bucket
SPARK

ID: 06790

3 831009 467917

1x75 g plastic bucket
SILVER

ID: 06791

TILING



KEMAPOX LF

Acid-resistant epoxy adhesive and joint grouting compound

Two-component acid-resistant epoxy adhesive and joint grouting compound for joints with 3-10 mm width. Suitable for adhesion or grouting of wall and floor ceramic and similar tiles. Suitable for food and chemical industry, for protection of tailing ponds, in hospitals, for swimming pools and sanitation, terraces and balconies, underfloor heating.

Available colours: E10 - grey, E60 - white.

Consumption: 0.6-1.4 kg/m² for adhesion of tiles (1 mm of thickness);
0.4-1.2 kg/m² for grouting, depending on depth and width of joints

5/1

4,62 kg of component A +

0,38 kg of component B

100 buckets/pallet



E10 grey

ID: 06772



E60 white

ID: 06773

SEALING COMPOUNDS

NEW COLOR 05 and 07

KEMASIL

Silicone sealing compound

One-component, highly-elastic acetate-based silicone sealing compound with fungicidal activity. Colours tailored to the NANOCOLOR grouting compound: S05 - silver grey, S07 - light grey, S10 - grey, S15 - medium grey, S20 - dark grey, S30 - anthracite grey, S40 - light brown, S50 - brown, S60 - white, S70 - manhattan, S75 - vanilla, S80 - beige, S85 - almond, S90 - sahara, S100 - terracotta, S105 - yellow, S110 - pink, S115 - ice blue, S120 - light blue, S130 - blue, S135 - green, S140 - light green, S150 - transparent. KEMASIL sealing compound has an excellent grip on glass, ceramics, glazed surfaces, aluminium and copelite glass. Especially suitable for permanent elastic joints in construction, recommended for indoor use.

310 ml/1

12 cartridge/cardboard box

ID: 03350 **S150 - transparent**

ID: 03347 **S05 - silver grey**

ID: 03304 **S07 - light grey**

ID: 03351 **S10 - grey**

ID: 03378 **S15 - medium grey**

ID: 03352 **S20 - dark grey**

ID: 03379 **S30 - anthracite grey**

ID: 03354 **S40 - light brown**

ID: 03355 **S50 - brown**

ID: 03356 **S60 - white**

ID: 03357 **S70 - manhattan**

ID: 03380 **S75 - vanilla**

ID: 03358 **S80 - beige**

ID: 03381 **S85 - almond**

ID: 03359 **S90 - sahara**

ID: 03382 **S100 - terracotta**

ID: 03383 **S105 - yellow**

ID: 03384 **S110 - pink**

ID: 03385 **S115 - ice blue**

ID: 03362 **S120 - light blue**

ID: 03363 **S130 - blue**

ID: 03386 **S135 - green**

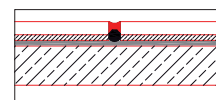
ID: 03387 **S140 - light green**



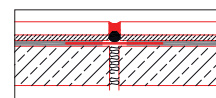
Consumption: see Table on page 47



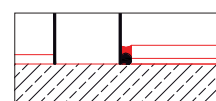
Joint depth (mm)	KEMAFLEX PU (600 ml)						KEMASIL and KEMAFLEX ACRYL (310 ml)					
	Joint width (mm)						Joint width (mm)					
6	17,2	12,8	10,2	8,6			8,5	6,4	5,2	4,5		
8		9,6	7,6	6,4	5,2			4,9	3,9	3,3	2,7	
10			6,2	5,2	4,0	3,0			3,2	2,7	2,2	1,7
12				4,2	3,4	2,6				2,3	1,9	1,4
15					2,6	2,0					1,5	1,2
20						1,50						1,00



Expansion joint



Dilatation joint



Connection joint

KEMAFLEX ACRYL

Permanently elastic sealing compound

Permanently elastic acrylic sealing compound for joint sealing in construction, for outdoor and indoor use. Suitable for wood, concrete, cellular concrete, ceramic tiles, gypsum panels, bricks, fibre cement boards. For joint sealing in mounting frames and shelves, and various joints in modular construction, for joints in screeds, gas-concrete, gypsum-cardboard and wooden substrates. Suitable for jointing of PVC profiles, zinc-coated and varnished metals, if they are to be bonded with absorbent materials. Not suitable for polypropylene, polyethylene, PTFE, neoprene, bitumen, glass and natural stone surfaces. The compound is UV-stable, odourless, suitable for painting and has a good adhesion.



Consumption: see Table

310 ml/1

12 cartridge/cardboard box



grey

ID: 03376



white

ID: 03375



brown

ID: 03377

KEMAFLEX PU

One-component polyurethane-based compound

One-component, permanently elastic, polyurethane-based sealing-adhesive compound, which solidifies using moisture in the air. Colour: grey. Excellent adhesion to most materials used in construction and industry. Water and vibration-resistant. Absorbs vibrations in long-term dynamic loads. Suitable for subsequent painting.



Consumption: see Table



600 ml/1

ALU sleeve

20 pcs./cardboard box

40 cardboard boxes/pallet

ID: 00136

TILING

PRIMERS AND COATINGS

POSSIBLE DILUTION OF 1:3



KEMACRYL

Polymer dispersion – bonding old–new

Polymer dispersion for bonding old and new coverings, improving cement mortars, and impregnating (priming) of highly absorbent mineral surfaces.

Consumption: 0.3–0.5 l/m² for bonding layer;
0.7–1.0 l/m² for cement coating;
0.1–0.3 l/m² for impregnation of highly absorbent mineral surfaces.



10/1

60 plastic cans/pallet

ID: 00322



5/1

128 plastic cans/pallet

ID: 00321



1/1

8 plastic cans/cardboard box

72 cardboard boxes/pallet

ID: 00320



50/1

12 barrels/pallet

ON ORDER

ID: 00323

POSSIBLE DILUTION OF 1:3



KEMAGRUND A

Penetration primer for absorbent and low-absorbent mineral surfaces

Water-based dispersion for priming concrete surfaces, absorbent and low-absorbent mineral surfaces of screeds. Must be diluted with water in the ratio of minimum 1:1 and maximum 1:3 before use.

Consumption: 0.1–0.2 kg/m² depending on surface absorption



10/1

60 plastic cans/pallet

ID: 00365



5/1

128 plastic cans/pallet

ID: 00364



1/1

8 plastic cans/cardboard box

72 cardboard boxes/pallet

ID: 00363

TILING

KEMA

WATERPROOF COATINGS AND SEALING RIBBONS

FOR DRINKING WATER

**HIDROSTOP ELASTIK****Two-component elastic waterproof coating**

Two-component highly elastic cement-based waterproof coating (with positive and negative water pressure), vapour-permeable and frost-resistant. Suitable for sealing of balconies, terraces, bathrooms, pools, water reservoirs, etc., directly under tiles, for indoor and outdoor use. Especially suitable for surfaces with high possibility of cracks or dynamic load, which demand reliable flexibility of the water-resistant layer and resistance to sodium chloride, diesel oil and ammonium sulphate. Its advantage over bituminous hydrolysis is the possibility of application on a wet surface.

**28/1**

20 kg of component A +
8 kg of component B
63 bags/pallet + 63 plastic cans/pallet

ID: 03310

**17,5/1**

12,5 kg of component A +
5 kg of component B
40 buckets/pallet

ID: 03399

**7/1**

5 kg of component A +
2 kg of component B
36 buckets/pallet

ID: 03397

Consumption: 3-4 kg of pre-prepared coating/m² for two layers of application with a brush

FOR DRINKING WATER

EASY INSTALLATION



* GREENTECHNOLOGY

* **GWP -36% CO₂ emissions**
with regard to a comparable product
LCA SIST EN 15804:2012

**HIDROSTOP VARIO****Two-component elastic waterproof compound of a new generation**

Two-component, highly-elastic, cement-bound waterproof compound, water-resistant at positive and negative water pressure, vapour permeable and frost-resistant. Suitable for:

- Sealing balconies, terraces, bathrooms, pools, water tanks, etc., directly under tiles, for indoor and outdoor use. In accordance with SIST EN 14891 requirements, it is ranked in the highest CM 02 P class (CM = liquid built-in water-resistant cement-based compound, 02 = bridging cracks at -20°C, P = resistant in chlorinated water),
- Protecting concrete in accordance with SIST EN 1504-2 standard requirements as a surface coating (C) for controlling the moisture content in concrete (MC principle) with capability to bridging cracks of A4 class (1.25 mm).

**28/1**

20 kg of component A +
8 kg of component B
63 bags/pallet + 63 plastic cans/pallet

ID: 04189

Consumption: 1.5 kg/m² for a mm of layer thickness.

Machine application (airless - PFT): approx. 2 kg/m² for a mm of layer thickness

TILING

EASY INSTALLATION



HIDROSTOP DP

Waterproof dispersion coating

Permanently elastic waterproof coating for protective waterproof coatings under ceramic tiles. Suitable for indoor use with a simple and quick application with a roller. Especially suitable for bathrooms.

Consumption: approx. 0.35-0.70 kg/m² for one layer or
0.70-1.40 kg/m² for two layers, depending on surface smoothness

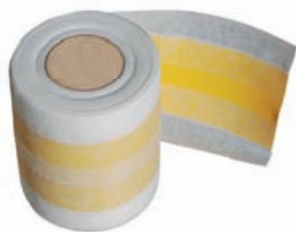


5/1

100 plastic buckets/pallet

ID: 00147

XL width 120mm



KEMABAND SEALING RIBBON 12

Sealing tape (12 cm)

Nitrile-butadiene (NBR) permanently elastic sealing dilatation tape on fleece lamination with 20 mm central expansive zone. Waterproof, elastic at low temperatures, resistant to alkaline substances, acids and salts, with excellent recovery characteristics, and fully silicone compatible. For sealing joints and dilatation joints in bathrooms, swimming pools, terraces and balconies with the system of waterproof coatings HIDROSTOP ELASTIK, HIDROSTOP VARIO, HIDROSTOP FLEX, HIDROSTOP DP, HIDROSTOP PENETRAT, HIDROSTOP VH and HIDROSTOP 94.

Consumption: When calculating consumption, allow for a tape overlap of at least 5 cm.



10 m

10 m/box

ID: 03320



50 m

50 m/box

ID: 03333

XL width 120mm



KEMABAND TACK 12

Self-adhesive sealing tape

Self-adhesive, rubber-coated, butyl-based tape, with 120 mm width. Waterproof, elastic even at low temperatures, resistant to alkaline substances, acids and salts. For sealing joints and dilatation joints in bathrooms, laundry rooms and moisture-burdened surfaces with the system of waterproof coatings HIDROSTOP ELASTIK, HIDROSTOP VARIO, HIDROSTOP FLEX, HIDROSTOP DP, HIDROSTOP PENETRAT, HIDROSTOP VH and HIDROSTOP 94.

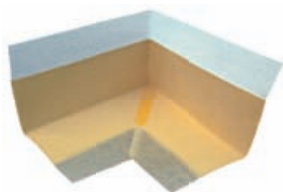
Consumption: When calculating consumption, allow for a tape overlap of at least 2 cm.



10 m

10 m/box

ID: 03332



KEMABAND Y CORNER ELEMENT

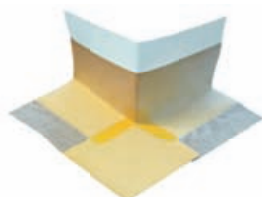
Inner corner sealing tape element

Elastomeric, highly elastic sealing dilatation tape on polyester lamination, formed into an inner corner element, dimensions 140 x 140 mm, width 120 mm. For easier and safer sealing of joints and dilatation joints in corners. For indoor and outdoor use.



1/1
25 pcs/box

ID: 03322



KEMABAND X CORNER ELEMENT

Outer corner sealing tape element

Elastomeric, highly elastic sealing dilatation tape on polyester lamination, formed into an outer corner element, dimensions 210 x 210 mm, width 120 mm. For easier and safer sealing of joints and dilatation joints in corners. For indoor and outdoor use.



1/1
25 pcs/box

ID: 03323



KEMABAND SLEEVE M12

Wall sleeve, dimensions 120 x 120 mm

Nitrile-butadiene (NBR), permanently elastic sealing sleeve on fleece lamination. Waterproof, elastic even at low temperatures. Wall sleeve for sealing wall penetration holes for installation purposes.



1/1
25 pcs/box

ID: 03324



KEMABAND SLEEVE M35

Floor sleeve, dimensions 350 x 350 mm

Nitrile-butadiene (NBR), permanently elastic sealing sleeve on fleece lamination. Waterproof, elastic even at low temperatures. Floor sleeve for sealing drains and floor penetration holes for installation purposes.



1/1
10 pcs/box

ID: 03388

ALSO SEE-

Additional products for laying tiles **ARTCOLOR CLEANER GEL**, **KEMAPOX WHIPE**, **CLEANING FLOAT FOR CLEANING** and **KEMAFLEX PE X10**, can be found among other products on pages 113 and 114.





CONCRETE RESTORATION AND WATERPROOFING

- PRODUCTS FOR RESTORATION AND PROTECTION OF CONCRETE
- WATERPROOF COATINGS AND FAST-SETTING MORTARS
- SEALING RIBBONS

CONCRETE RESTORATION AND WATERPROOFING

PRODUCTS FOR RESTORATION AND PROTECTION OF CONCRETE

TO 4 cm IN ONE LAYER

BETONPROTEKT RT

Repair mortar for vertical and ceiling concrete surfaces

Micro-reinforced thixotropic repair mortar according to SIST EN 1504-3: PCC mortar for construction repairs, class R4. Suitable for restoration of visible damage on the surface of concrete, for levelling concrete surfaces, restructuring of corners, stairs, edges, etc. Min. 5 mm and max. 40 mm of layer thickness in one application.



Consumption: 18-20 kg/m² per each cm of layer thickness



25/1

48 bags/pallet

ID: 00344

BETONPROTEKT RP

Repair mortar for horizontal concrete surfaces

Super-plasticised micro-reinforced sulphate-resistant PCC repair mortar (SIST EN 1504-3) for construction repairs, class R2 (conditionally R4). Suitable for repairing and levelling of horizontal concrete surfaces. Min. 10 mm and max. 40 mm of layer thickness in one application.



Consumption: 18-20 kg/m² per each cm of layer thickness



25/1

48 bags/pallet

ID: 02539

BETONPROTEKT F

Fine levelling compound and anti-corrosion protection for concrete surfaces

Micro-reinforced, sulphate-resistant compound, SIST EN 1504-2: protective coating for concrete. Compound for levelling and the final layer before colouring new and restored concrete surfaces, for waterproof, oil resistant and anti-corrosion protection of various construction elements exposed to aggressive environmental influences, for repairing surface of concrete prefabricates, and for fine levelling of concrete and lime-concrete plasters. Min. 1 mm and max. 5 mm of layer thickness in one application.



Consumption: 3-4 kg/m² for a 2 mm thick layer



25/1

48 bags/pallet

ID: 00346

CONCRETE RESTORATION AND WATERPROOFING



BETONPROTEKT K2

Reinforcement protection and bonding bridge

Two-component bonding bridge for adding protection to the armature of damaged reinforced concrete, preparation of the bonding bridge (bond old-new) when placing bonded screed, subsequent application of a levelling mortar layer, and other resurfacings of cleaned and stable old concrete surface. Special caution is recommended as the bond must be implemented as "fresh-to-fresh".



Consumption: approx. 2.0 kg/m² for a single application



33/1

25 kg of component A +
8 kg of component B
48 bags/pallet + 48 plastic cans/pallet

ID: 00351



3,3/1

2,5 kg of component A +
0,8 kg of component B
36 buckets/pallet

ID: 06801

FOR DRINKING WATER

EASY INSTALLATION



* GREENTECHNOLOGY

* **GWP -36% CO₂ emissions**
with regard to a comparable product
LCA SIST EN 15804:2012

HIDROSTOP VARIO

Two-component elastic waterproof compound of a new generation

Two-component, highly-elastic, cement-bound waterproof compound, water-resistant at positive and negative water pressure, vapour permeable and frost-resistant. Suitable for:

- Sealing balconies, terraces, bathrooms, pools, water tanks, etc., directly under tiles, for indoor and outdoor use. In accordance with SIST EN 14891 requirements, it is ranked in the highest CM 02 P class (CM = liquid built-in water-resistant cement-based compound, 02 = bridging cracks at -20°C, P = resistant in chlorinated water),
- Protecting concrete in accordance with SIST EN 1504-2 standard requirements as a surface coating (C) for controlling the moisture content in concrete (MC principle) with capability to bridging cracks of A4 class (1.25 mm).



28/1

20 kg of component A +
8 kg of component B
63 bags/pallet + 63 plastic cans/pallet

ID: 04189



Consumption: 1.5 kg/m² for a mm of layer thickness.
Machine application (airless - PFT): approx. 2 kg/m² for a mm of layer thickness

CONCRETE RESTORATION AND WATERPROOFING

NEW

BETONPROTEKT COLOR ELASTIK

Elastic color for concrete

Easy to install, elastic, vapor-permeable color for concrete for color manipulation of the concrete surface. The color does not contain solvents and is UV resistant. It is distinguished by an excellent surface grip, resistance to weather impacts and efficient protection against carbon monoxide and reduction of possibility of carbonatisation. The color meets the demands of the standard: N 1504-2:2004, 1-1.3 (C), XF3 and conforms to the Austrian guidance ÖBV: »Erhaltung und Instandsetzung von Bauten aus Beton und Stahlbeton« (Maintenance and Restoration of Concrete and Reinforced Concrete Buildings)..

COLOR	5/1	20/1
K0168 - beige	ID: 03427	ID: 03467
K0182 - light brown	ID: 03434	ID: 03468
K0392 - dark brown	ID: 03435	ID: 03469
K0402 - brown	ID: 03436	ID: 03470
K0462 - orange	ID: 03437	ID: 03471
K0582 - brick red	ID: 03438	ID: 03472
K0602 - brown red	ID: 03439	ID: 03473
K0772 - light blue	ID: 03440	ID: 03474
K0874 - grey	ID: 03441	ID: 03475
K0884 - dark grey	ID: 03442	ID: 03476
K0886 - medium grey	ID: 03443	ID: 03477
K0888 - light grey	ID: 03444	ID: 03478
K0902 - anthracite	ID: 03445	ID: 03479
K0934 - olive grey	ID: 03446	ID: 03480
K1032 - green	ID: 03447	ID: 03481
WHITE	ID: 03465	ID: 03482
RAW	ID: 03466	ID: 03483

Consumption: approx. 0.15 kg/m²/mm diluted (as priming coating with max. 5% of water),
approx. 0.40 kg/m²/mm the thickness of wet layer application (as double coating)

5/1 **ON ORDER**
100 plastic buckets/pallet

20/1 **ON ORDER**
24 plastic buckets/pallet



NEW

BETONPROTEKT COLOR ACRYL

Acrylic color for concrete

Rigid, vapor-permeable color for concrete for color manipulation of concrete surface. The color does not contain solvents and is UV resistant. It is distinguished by excellent surface grip, resistance to weather impacts and efficient protection against carbon monoxide. The color satisfies the demands of the standard: N 1504-2:2004, 1-1.3 (C), XF3.

COLOR	5/1	20/1
K0168 - beige	ID: 03448	ID: 03484
K0182 - light brown	ID: 03449	ID: 03485
K0392 - dark brown	ID: 03450	ID: 03486
K0402 - brown	ID: 03451	ID: 03487
K0462 - orange	ID: 03452	ID: 03488
K0582 - brick red	ID: 03453	ID: 03489
K0602 - brown red	ID: 03454	ID: 03490
K0772 - light blue	ID: 03455	ID: 03491
K0874 - grey	ID: 03456	ID: 03492
K0884 - dark grey	ID: 03457	ID: 03493
K0886 - medium grey	ID: 03458	ID: 03494
K0888 - light grey	ID: 03459	ID: 03495
K0902 - anthracite	ID: 03460	ID: 03496
K0934 - olive grey	ID: 03461	ID: 03497
K1032 - green	ID: 03462	ID: 03498
WHITE	ID: 03463	ID: 03499
RAW	ID: 03464	ID: 03401

Consumption: approx. 0.15 kg/m²/mm diluted (as priming coating with max. 5% of water),
approx. 0.40 kg/m²/mm the thickness of wet layer application (as double coating)

5/1 **ON ORDER**
100 plastic buckets/pallet

20/1 **ON ORDER**
24 plastic buckets/pallet



CONCRETE RESTORATION AND WATERPROOFING



ISOTAL

Grouting mortar

Plasticised cement compound with 4 mm granulation with shrinkage compensation, high initial and final firmness. For grouting steel constructions, anchors, machine bases, foundations and joint sealing.



30/1
42 bags/pallet

ID: 00358



Consumption: approx. 2 kg for filling a 1 dm³ volume

POSSIBLE DILUTION OF 1:3

KEMACRYL

Polymer dispersion – bonding old–new

Polymer dispersion for bonding old and new coverings, improving cement mortars, and impregnating (priming) of highly absorbent mineral surfaces.



10/1
60 plastic cans/pallet

ID: 00322



5/1
128 plastic cans/pallet

ID: 00321



1/1
8 plastic cans/cardboard box
72 cardboard boxes/pallet

ID: 00320



Consumption: 0.3-0.5 l/m² for bonding layer;
0.7-1.0 l/m² for cement coating;
0.1-0.3 l/m² for impregnation of highly absorbent mineral surfaces.



50/1
12 barrels/pallet

ON ORDER

ID: 00323

CONCRETE RESTORATION AND WATERPROOFING

POSSIBLE DILUTION OF 1:3



KEMAGRUND A

Penetration primer for absorbent and low-absorbent mineral surfaces

Water-based dispersion for priming concrete surfaces, absorbent and low-absorbent mineral surfaces of screeds. Must be diluted with water in the ratio of minimum 1:1 and maximum 1:3 before use.

Consumption: 0.1-0.2 kg/m² depending on surface absorption



10/1

60 plastic cans/pallet

ID: 00365



5/1

128 plastic cans/pallet

ID: 00364



1/1

8 plastic cans/cardboard box
72 cardboard boxes/pallet

ID: 00363

KEMALATEX

Polymer dispersion for bonding bridge (bond old-new) for sanitation and over coating of old concrete surfaces

For the preparation of bonding bridge (bond old-new) for installation of composite screed or for installing levelling mortar on prepared and stable old concrete surface. Can be used concentrated or diluted with water in the ratio 1:1. For best results the bonding bridge is prepared as a cement paste, with cement mixing ratio of 1:2.



Consumption: 0.5-0.7 l/m² for bonding layer



10/1

60 plastic cans/pallet

ID: 00327



50/1

12 barrels/pallet

ON ORDER

ID: 00328



Bulk

1000 l container

ON ORDER

ID: 00329

CONCRETE RESTORATION AND WATERPROOFING



KEMAPOX FILL 1000

Epoxy injection resin

Two-component, extremely liquid, highly-adhesive, low-viscosity epoxy resin for injecting and bonding of construction elements. Suitable for use with low-pressure gun on vertical surfaces and surface sealing, and reattaching of substrates on horizontal surfaces.

Consumption: 0.3-0.5 kg/m², depending on crack width and depth



26/1

20 kg of component A +
6 kg of component B

ID: 08499



3,9/1

3,0 kg of component A +
0,9 kg of component B

ID: 08498

KEMAPUR FILL 1150

Polyurethane injection resin

Elastic, transparent, two-component polyurethane resin for injecting and bonding of construction elements. Used for filling wet and dry cracks and construction elements, strengthening in restoration of older objects, sealing of cracks in underground areas and tunnels.

Consumption: 0.3-0.5 kg/m², depending on crack width and depth



17,5/1

ON ORDER

12,5 kg of component A +
5 kg of component B

ID: 01822



3,5/1

2,5 kg of component A +
1 kg of component B

ID: 02535



EXTRA-STRONG BONDING LAYER



KEMAPOX LINK

Two-component epoxy bonding bridge

Water-based epoxy resin for impregnation of cement bases, construction of bonding bridge in resurfacing of old concrete with new cement compounds with "fresh-to-fresh" system.

Consumption: 0.1-0.3 kg/m², depending on substrate absorption



28/1

10 kg of component A +
18 kg of component B

ID: 08450



5,6/1

2 kg of component A +
3,6 kg of component B

ID: 08451

CONCRETE RESTORATION AND WATERPROOFING

WATERPROOF COATINGS AND FAST-SETTING MORTARS



HIDROSTOP 94

One-component cement-based waterproof coating

Polymer-cement compound for waterproof protection of exposed outdoor and indoor concrete, cement and other mineral surfaces. Especially suitable for sanitation of underground parts of the object from the inside, and for waterproof treatment of surfaces not subjected to deformation and cracks.

Consumption: 3-4 kg/m² for two layers of application with a brush (approx. 2 mm of thickness)



25/1

48 bags/pallet

ID: 03308



5/1

6 bags/cardboard box

30 cardboard boxes/pallet

ID: 00127

FOR DRINKING WATER



HIDROSTOP ELASTIK

Two-component elastic waterproof coating

Two-component highly elastic cement-based waterproof coating (with positive and negative water pressure), vapour-permeable and frost-resistant. Suitable for sealing of balconies, terraces, bathrooms, pools, water reservoirs, etc., directly under tiles, for indoor and outdoor use. Especially suitable for surfaces with high possibility of cracks or dynamic load, which demand reliable flexibility of the water-resistant layer and resistance to sodium chloride, diesel oil and ammonium sulphate. Its advantage over bituminous hydrolysis is the possibility of application on a wet surface.

Consumption: 3-4 kg of pre-prepared coating/m² for two layers of application with a brush



28/1

20 kg of component A +

8 kg of component B

63 bags/pallet + 63 plastic cans/
pallet

ID: 03310



17,5/1

12,5 kg of component A +

5 kg of component B

40 buckets/pallet

ID: 03399



7/1

5 kg of component A +

2 kg of component B

36 buckets/pallet

ID: 03397

1 COMPONENT FLEXIBLE



HIDROSTOP FLEX

One-component elastic waterproof coating

One-component highly elastic vapour-permeable waterproof coating, suitable for sealing of bathrooms, balconies, terraces and pools.

Consumption: 3-4 kg of pre-prepared coating/m² for two layers of application with a brush



20/1

60 bags/pallet

ID: 00125

CONCRETE RESTORATION AND WATERPROOFING



FOR DRINKING WATER

EASY INSTALLATION



GREENTECHNOLOGY

* GWP -36% CO₂ emissions
with regard to a comparable product
LCA SIST EN 15804:2012



HIDROSTOP VARIO

Two-component elastic waterproof compound of a new generation

Two-component, highly-elastic, cement-bound waterproof compound, water-resistant at positive and negative water pressure, vapour permeable and frost-resistant. Suitable for:

- Sealing balconies, terraces, bathrooms, pools, water tanks, etc., directly under tiles, for indoor and outdoor use. In accordance with SIST EN 14891 requirements, it is ranked in the highest CM 02 P class (CM = liquid built-in water-resistant cement-based compound, 02 = bridging cracks at -20°C, P = resistant in chlorinated water),
- Protecting concrete in accordance with SIST EN 1504-2 standard requirements as a surface coating (C) for controlling the moisture content in concrete (MC principle) with capability to bridging cracks of A4 class (1.25 mm).

Consumption: 1.5 kg/m² for a mm of layer thickness.

Machine application (airless - PFT): approx. 2 kg/m² for a mm of layer thickness



28/1

20 kg of component A +

8 kg of component B

63 bags/pallet + 63 plastic cans/pallet

ID: 04189

EASY INSTALLATION

HIDROSTOP DP

Waterproof dispersion coating

Permanently elastic waterproof coating for protective waterproof coatings under ceramic tiles. Suitable for indoor use with a simple and quick application with a roller. Especially suitable for bathrooms.



Consumption: approx. 0.35-0.70 kg/m² for one layer or

0.70-1.40 kg/m² for two layers, depending on surface smoothness



5/1

100 plastic buckets/pallet

ID: 00147

FOR DRINKING WATER

INCREASED CHEMICAL
RESISTANCE

HIDROSTOP PENETRAT

Cement-based waterproof sulphate-resistant penetration coating

Waterproof penetration polymer-cement coating with special crystallisation additives ensures sealing of surfaces and of pores and capillaries in concrete. Ensures additional sealing despite surface damage and cracks. Suitable for surfaces in contact with oil derivatives, salts and other aggressors (sewers, animal food storage silos, waste water neutralisation tanks, cellars, fire-water reservoirs, etc.).



Consumption: 3-4 kg/m² for two layers of application with a brush (approx. 2 mm of thickness)



25/1

48 bags/pallet

ID: 03307

CONCRETE RESTORATION AND WATERPROOFING

FOR DRINKING WATER



HIDROSTOP VH (COMP. A)

Two-component waterproof coating for swimming pools and potable water reservoirs

Two-component waterproof coating with good workability, especially suitable for waterproof protection of concrete pools and potable water reservoirs.

Consumption: 3-4 kg/m² for two layers of application with a brush



25/1

48 bags/pallet

ID: 03312



HIDROSTOP ACRYL (COMP. B)

Polymer dispersion

Polymer dispersion for preparation of two-component cement-based waterproof coating HIDROSTOP VH.

Consumption: 2 l HIDROSTOP ACRYL emulsion/25 kg of HIDROSTOP VH dry mixture



10/1

60 plastic cans/pallet

ID: 03317



5/1

128 plastic cans/pallet

ID: 03316



1/1

8 plastic cans/cardboard box

72 cardboard boxes/pallet

ID: 03315

CONCRETE RESTORATION AND WATERPROOFING



BONDING - 20 min



HIDROSTOP KIT

Cement-based fast-setting putty

Cement-based fast-setting putty suitable for patching and repairing of concrete surfaces as well as creating semi-circular joints on horizontal and vertical surfaces.



25/1

48 bags/pallet

ID: 03319



5/1

6 boxes/cardboard box

30 cardboard boxes/pallet

ID: 03968

Consumption: 2 kg for filling a volume of 1 litre; approx. 2.5 kg/m² for semicircular joints

BONDING - 4 min



HIDROZAT

Cement-based fast-setting mortar

Cement-based fast-setting mortar, especially suitable for mounting various construction elements and stopping water flow.



25/1

48 bags/pallet

ID: 00131



5/1

6 boxes/cardboard box

30 cardboard boxes/pallet

ID: 00132

Consumption: 2 kg for filling a volume of 1 litre; approx.
2.5 kg/running metre for semicircular joints

BONDING - 1 min



HIDROZAT MOMENT

Cement-based reactive powder for immediate stopping of active water flow

Fast-setting powder for immediate stopping of water flow.



1/1

250 buckets/pallet

ID: 06795

Consumption: approx. 1.5 kg/m²

CONCRETE RESTORATION AND WATERPROOFING

SEALING RIBBONS

XL width 120mm



KEMABAND SEALING RIBBON 12

Sealing tape (12 cm)

Nitrile-butadiene (NBR) permanently elastic sealing dilatation tape on fleece lamination with 20 mm central expansive zone. Waterproof, elastic at low temperatures, resistant to alkaline substances, acids and salts, with excellent recovery characteristics, and fully silicone compatible. For sealing joints and dilatation joints in bathrooms, swimming pools, terraces and balconies with the system of waterproof coatings HIDROSTOP ELASTIK, HIDROSTOP VARIO, HIDROSTOP FLEX, HIDROSTOP DP, HIDROSTOP PENETRAT, HIDROSTOP VH and HIDROSTOP 94.

Consumption: When calculating consumption, allow for a tape overlap of at least 5 cm.



10 m

10 m/box

ID: 03320



50 m

50 m/box

ID: 03333

XL width 120mm



KEMABAND TACK 12

Self-adhesive sealing tape

Self-adhesive, rubber-coated, butyl-based tape, with 120 mm width. Waterproof, elastic even at low temperatures, resistant to alkaline substances, acids and salts. For sealing joints and dilatation joints in bathrooms, laundry rooms and moisture-burdened surfaces with the system of waterproof coatings HIDROSTOP ELASTIK, HIDROSTOP VARIO, HIDROSTOP FLEX, HIDROSTOP DP, HIDROSTOP PENETRAT, HIDROSTOP VH and HIDROSTOP 94.

Consumption: When calculating consumption, allow for a tape overlap of at least 2 cm.



10 m

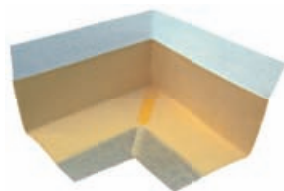
10 m/box

ID: 03332

KEMABAND Y CORNER ELEMENT

Inner corner sealing tape element

Elastomeric, highly elastic sealing dilatation tape on polyester lamination, formed into an inner corner element, dimensions 140 x 140 mm, width 120 mm. For easier and safer sealing of joints and dilatation joints in corners. For indoor and outdoor use.



1/1

25 pcs/box

ID: 03322



KEMABAND X CORNER ELEMENT

Outer corner sealing tape element

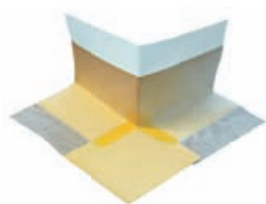
Elastomeric, highly elastic sealing dilatation tape on polyester lamination, formed into an outer corner element, dimensions 210 x 210 mm, width 120 mm. For easier and safer sealing of joints and dilatation joints in corners. For indoor and outdoor use.



1/1

25 pcs/box

ID: 03323



KEMABAND SLEEVE M12

Wall sleeve, dimensions 120 x 120 mm

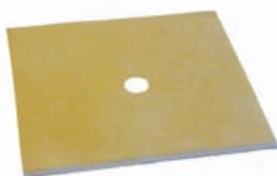
Nitrile-butadiene (NBR), permanently elastic sealing sleeve on fleece lamination. Waterproof, elastic even at low temperatures. Wall sleeve for sealing wall penetration holes for installation purposes.



1/1

25 pcs/box

ID: 03324



KEMABAND SLEEVE M35

Floor sleeve, dimensions 350 x 350 mm

Nitrile-butadiene (NBR), permanently elastic sealing sleeve on fleece lamination. Waterproof, elastic even at low temperatures. Floor sleeve for sealing drains and floor penetration holes for installation purposes.



1/1

10 pcs/box

ID: 03388



CONCRETE RESTORATION AND WATERPROOFING

KEMA SWELL

Hydrophilic swelling bentonite sealing strip, width 25 mm

Black flexible hydrophilic sealing strip based on bentonite and synthetic rubber. Permanently active system which swells up to approximately 400% of its original dry volume. The expansive bentonite mass will thus seal cracks and capillaries in the concrete which occur due to concrete shrinking in the joints. Suitable for sealing working joints in fresh concrete, pipe penetrations, in sewer joints and joints between prefabricated elements and between cast elements. For adhesion use KEMA MASTIC WA.



5/1 m

30 m/cardboard box

24 cardboard boxes/pallet

ID: 03340



Consumption: The length of the joint being sealed with approx. 10 cm overlap.

KEMA SWELL 05

Swelling polyurethane-based sealing strip, width 20 mm, thickness 5 mm

Permanently elastic swelling strip for sealing working joints, pipe penetrations, sewer joints and joints between prefabricated and cast elements. Extremely chemically-resistant and harmless to drinking water. For adhesion use KEMA MASTIC WA.



15/1

15 m/roll

10 rolls/cardboard box

12 cardboard boxes/pallet

ID: 06834



Consumption: The length of the joint being sealed with approx. 10 cm overlap.

KEMA MASTIC WA

Hydro swelling mastic for sealing in wet areas

Grey coloured, one-component, elastic, polyurethane-based, hydro swelling mastic which cures and swells in the presence of moisture. Swells up to approximately 200% of its original dry volume when in contact with water. Suitable for sealing rough and smooth working joints and pipe penetration in wet areas. Can be applied to concrete, PVC and HDPE surfaces, metals, etc.



600 ml/1

sleeve

12 pcs/cardboard box

40 cardboard boxes/pallet

ID: 03342



Consumption: Depends on concrete quality per running metre.



KEMAFOIL

Elastic waterproof foil

Elastic waterproof foil made of three layers, two outer non-woven polypropylene layers and the middle polyethylene waterproof foil, width 1000 mm, thickness 0.5 mm. Waterproof foil protects thin-set floor and wall tiles from substrate cracks and moisture.



30/1

30 m/roll

25 rolls/pallet

ID: 03343

Consumption: 1.1/m², with 10 cm overlap.





RENDERS AND MORTARS

- PRODUCTS FOR THERMAL INSULATION FACADE
- LEVELLING COMPOUNDS FOR WALLS AND CEILINGS
- READY-MIXED PLASTERS AND MORTARS
- BINDING AGENTS
- RESTORATION PLASTERS

RENDERS AND MORTARS

PRODUCTS FOR THERMAL INSULATION FACADE

FOR GLUING AND ALIGNMENT OF EPS PANELS



KEMATERM 230

Flexible adhesive and levelling compound for heat insulating panels

Flexible micro-reinforced cement-based adhesive and levelling mortar for adhesion of heat insulating panels (EPS polystyrene panels, XPS) on various mineral substrates, laying of glass mesh on heat insulating panels (reinforcing), and for final levelling before application of decorative plaster.

Consumption: approx. 4 kg/m² for heat insulating panel adhesion;
approx. 4 kg/m² for reinforced plaster (approx. 3 mm layer)



25/1
48 bags/pallet

ID: 03012

KEMATERM PU

Polyurethane adhesive for heat insulating panels

Polyurethane adhesive for heat insulating panels is one-component polyurethane foam, suitable for installation with sealant gun and hardens due to air humidity. For installation of heat insulating panels from polystyrene on bitumen substrate as parameter sealing on external basement walls. Is also used as assembly aid for installation insulating panels before foundation pit is filled in. Good adherence to concrete, brickwork, plasters, wood, metal, bitumen.

Consumption: 1 cartridge is for approx. 6 m² of panels



750 ml/1 aerosol can
12 cans/cardboard box
56 cardboard boxes/pallet

ID: 03145

LEVELLING COMPOUNDS FOR WALLS AND CEILINGS



KEMAGLET FX

Gypsum levelling compound

Gypsum-based vapor-permeable levelling compound for indoor use when levelling walls and ceilings before wallpapers and painting, for filling joints, cracks and various damages in installation of walls and gypsum-cardboard panels.

Consumption: 0.5-1.5 kg/m², depends on the application thickness and surface roughness



20/1
50 bags/pallet

ID: 00621



4/1
5 bags/cardboard box
30 cardboard boxes/pallet

ID: 00627

RENDERS AND MORTARS



ALSO FOR OUTDOOR USE



KEMAGLET G

White cement-based levelling compound

Cement-based levelling compound for levelling plastered façade surfaces, indoor walls and ceilings, cellars, concrete pillars, layer thickness 1-5 mm for one-time application, white colour. Suitable for covering joints, puttying of up to 1 cm deep holes in walls. Moisture- and water resistant, for indoor and outdoor use.

Consumption: 1.0 kg/m² per mm of layer thickness



20/1

60 bags/pallet

ID: 00618



5/1

5 bags/cardboard box

30 cardboard boxes/pallet

ID: 00614

READY-MIXED PLASTERS AND MORTARS

KEMAMIX G

Rough lime-cement plaster

Rough lime-cement plaster with quartz sand, suitable for façade and indoor surfaces, as well as spaces with heavy moisture.

Consumption: 13-15 kg/m² for a 10 mm thick layer



25/1

48 bags/pallet

ID: 00250



KEMAMIX F

Fine lime-cement plaster

Fine interior and exterior lime-cement plaster with quartz sand for fine levelling of rough plaster.

Consumption: 3-5 kg/m²



20/1

60 bags/pallet

ID: 03104



RENDERS AND MORTARS



KEMAMIX SPX

Adhesive for gas concrete

Cement-based thin-layer adhesive for gas concrete elements, bricks and panels. For indoor and outdoor use with approx. 3 mm of layer thickness.

Consumption: 20-25 kg for a m³ of gas concrete elements



25/1

48 bags/pallet

ID: 03021

BINDING AGENTS



KEMAFIN CEMENT W

White cement CEM I 52,5 R

White Portland cement CEM I 52,5 R(I). For restoration, visible concrete surfaces, concrete prefabricates, etc.

Consumption: depends on the purpose of use



20/1

60 bags/pallet

ID: 03108



5/1

5 bags/cardboard box

30 cardboard boxes/pallet

ID: 03985



KEMAFIN ELECTRO GYPSUM

Mounting gypsum

Mixture of finely ground alabaster gypsum and quartz sand. For mounting and fixing of electrical installations, filling holes and repairing damaged walls. For indoor use.

Consumption: approx. 1 kg/dm³



4/1

5 bags/cardboard box

30 cardboard boxes/pallet

ID: 00298

RENDERS AND MORTARS



RESTORATION PLASTERS



**SUCCESSFULLY SOLVES
MOISTURE**



HYDROMENT DRYING PLASTER

Drying plaster

Drying plaster based on hydraulic binding agents with high content of special open micro pores. For restoration of plasters damaged by capillary moisture and for protection of new constructions in areas exposed to moisture and salt.



30/1

42 bags/pallet

ID: 00219

Consumption: approx. 30 kg/m² for a layer thickness of 2 cm



**SUCCESSFULLY SOLVES
MOISTURE**



HYDROMENT FINE PLASTER

Fine restoration plaster

Dry, industrially prepared mixture based on hydraulic binders, quality quartz sand and special additives for better adherence, workability and richness. Indoor and outdoor fine plaster for final levelling of the Hydroment drying plaster.



30/1

42 bags/pallet

ID: 02191

Consumption: approx. 3.5 kg/m²

KEMASAN 590

Roman lime-based restoration plaster

Roman lime-based restoration plaster used for restoration of capillary moisture in walls with high moisture content. Used for restoration of plaster damaged by capillary moisture. Especially recommended for restoration of historical buildings and buildings under cultural heritage protection.



25/1

48 bags/pallet

ID: 03419



Consumption: 30 kg/m² for a 2 cm thick layer

RENDERS AND MORTARS

KEMASAN 590 F

Fine Roman lime-based restoration plaster

Fine indoor and outdoor plaster for final levelling of KEMASAN plasters.



Consumption: 3 kg/m² for a 2 mm thick layer



25/1

48 bags/pallet

ID: 03420

KEMASAN 590 FF

Fine levelling compound based on Roman lime

Extremely fine levelling compound used for final levelling of plasters, façade and stucco repair on historical buildings on indoor and outdoor surfaces. It can also be used on other mineral substrates, where you want to achieve an extremely fine surface before application of final colors or coatings. The compound is distinguished by excellent surface grip, moisture and salt resistance and easy application.



Consumption: approx. 1.5 kg/m² for a layer thickness of 1 mm



15/1

ON ORDER

36 plastic buckets/pallet

ID: 03421

MACHINE APPLICATION

KEMASAN 595 S

Restoration plaster based on Roman lime for machine application

Drying plaster based on Roman lime as binding agent. Characterized particularly by high diffusiveness, suited for machine application. Used for permanent restoration of walls with high moisture consist. Base course plaster, internal plaster for cellars, plaster for cellar arches under the ground level, for all kinds of moisture-damaged walls (mixed walls included) and especially for moist, salt-impregnated walls. Extra recommended for restoration of historical buildings and buildings under protection of cultural heritage. Recommended also for renovation of horizontal isolation, where other methods are not suitable.



Consumption: 30 kg/m² for a layer thickness of 2 cm



25/1

ON ORDER

48 bags/pallet

ID: 00246

RENDERS AND MORTARS



2 in 1

KEMASAN 550

Restoration plaster

Lime-cement plaster for restoration of plasters damaged by capillary moisture. Suitable for fine restoration due to fine grains size (up to 1 mm).



25/1

48 bags/pallet

ID: 03406



Consumption: 25 kg/m² for a 2 cm thick layer

KEMASAN 520

Rough lime plaster

Ready-mixed slightly prolonged rough lime plaster for plastering. Well suited for use on historical buildings where controlled composition and regular plaster quality are required.



25/1

48 bags/pallet

ID: 03404



Consumption: approx. 30 kg/m² for a 2 cm thick layer

KEMASAN 580

Drying plaster based on hydraulic binding agents with high content of special open micro pores

For restoration of plasters damaged by capillary moisture and for protection of new constructions in areas exposed to moisture and salt. For internal and external render, plynth plaster, cellar plaster, vault plaster. For all types of walls (brick, stone, concrete). Not suitable for restoration due to water ingress.



30/1

42 bags/pallet

ID: 03411



Consumption: approx. 30 kg/m² for a layer thickness of 2 cm

ALSO SEE-

Additional products for setting up the capillary moisture barrier **KEMASOL** and **KEMASOL MICRO**, can be found among other products on pages 108 and 109.





FLOORING

- PRIMERS AND COATINGS
- FLOOR-LEVELLING COMPOUNDS
- INDUSTRIAL FLOORS
- EPOXY AND POLYURETHANE FLOORING AND COATING

FLOORING

PRIMERS AND COATINGS

POSSIBLE DILUTION OF 1:3

**KEMACRYL****Polymer dispersion – bonding old–new**

Polymer dispersion for bonding old and new coverings, improving cement mortars, and impregnating (priming) of highly absorbent mineral surfaces.

Consumption: 0.3–0.5 l/m² for bonding layer;
0.7–1.0 l/m² for cement coating;
0.1–0.3 l/m² for impregnation of highly absorbent mineral surfaces.

**10/1**

60 plastic cans/pallet

ID: 00322

**5/1**

128 plastic cans/pallet

ID: 00321

**1/1**

8 plastic cans/cardboard box

72 cardboard boxes/pallet

ID: 00320

**50/1**

12 barrels/pallet

ON ORDER

ID: 00323

POSSIBLE DILUTION OF 1:3

**KEMAGRUND A****Penetration primer for absorbent and low-absorbent mineral surfaces**

Water-based dispersion for priming concrete surfaces, absorbent and low-absorbent mineral surfaces of screeds. Must be diluted with water in the ratio of minimum 1:1 and maximum 1:3 before use.

Consumption: 0.1–0.2 kg/m² depending on surface absorption

**10/1**

60 plastic cans/pallet

ID: 00365

**5/1**

128 plastic cans/pallet

ID: 00364

**1/1**

8 plastic cans/cardboard box

72 cardboard boxes/pallet

ID: 00363



KEMALATEX

Polymer dispersion for bonding bridge (bond old–new) for sanitation and over coating of old concrete surfaces

For the preparation of bonding bridge (bond old–new) for installation of composite screed or for installing levelling mortar on prepared and stable old concrete surface. Can be used concentrated or diluted with water in the ratio 1:1. For best results the bonding bridge is prepared as a cement paste, with cement mixing ratio of 1:2.



Consumption: 0.5-0.7 l/m² for bonding layer



10/1

60 plastic cans/pallet

ID: 00327



50/1

ON ORDER

12 barrels/pallet

ID: 00328



Bulk

ON ORDER

1000 l container

ID: 00329

FLOORING

FLOOR-LEVELLING COMPOUNDS

SELF-LEVELLING FLOOR COMPOUNDS

**C25
F6 B2**



ALSO FOR OUTSIDE



LINEA 803 SL

**Self-levelling floor compound, 1-10 mm,
CT/C25/F6/B2 according to SIST EN 13813**

Self-levelling, casein-free (biologically impeccable), cement-bound and polymer-enriched floor levelling compound. Ready for foot traffic in 24 hours. Suitable for underfloor heating. For thin-layer levelling of all types of concrete substrates and cement screeds prior to laying the flooring (parquet, wood flooring, ceramic tiles, carpeted floor, itison and all types of PVC floor coverings), for indoor and outdoor use of a 1-10 mm of layer thickness.



25/1
48 bags/pallet

ID: 00633

Consumption: 1.8 kg/m² per each mm of layer thickness

**C25
F6 B2**



FAST-SETTING



LINEA 810 SL

**Fast-setting self-levelling floor compound,
1-10 mm, CT/C25/F6/B2 according to SIST EN 13813**

Fast-setting, casein-free (biologically impeccable), polymer cement self-levelling floor compound for indoor use. Ready for foot traffic in 3-4 hours. Suitable for underfloor heating. For thin-layer levelling of all types of concrete foundations and cement screeds prior to laying the flooring (parquet, wood flooring, ceramic tiles, carpeted floor, itison and all types of PVC floor coverings), for a 1-10 mm of layer thickness.



25/1
48 bags/pallet

ID: 00635

Consumption: approx. 1.5 kg/m² per each mm of layer thickness

**C35
F10 B2**



STRENGTH 35 N/mm²



LINEA 811 SL

**Fast-setting self-levelling floor compound, for levelling up
to 20 mm, CT/C35/F10/B2 according to SIST EN 13813**

Fast-setting, casein-free (biologically impeccable), polymer cement self-levelling floor compound for indoor use. Ready for foot traffic in 4 hours. Suitable for underfloor heating. Used for thin- and medium-layer levelling of all types of concrete foundations and cement screeds prior to laying the flooring (parquet, wood flooring, ceramic tiles, carpeted floor, itison and all types of PVC floor coverings). Up to 20 mm layer thickness.



25/1
48 bags/pallet

ID: 00628

Consumption: approx. 1.5 kg/m² per each mm of layer thickness

FLOORING

KEMA

STRENGTH 35 N/mm²**LINEA 830 SL****Fast-setting self-levelling floor compound, 5-30 mm, CT/C35/F10/B2 according to SIST EN 13813**

Fast-setting, casein-free (biologically impeccable), polymer cement self-levelling floor compound for indoor use. Ready for foot traffic in 4 hours. Suitable for underfloor heating. Used for thin- and medium-layer levelling of all types of concrete foundations and cement screeds prior to laying the flooring (parquet, wood flooring, ceramic tiles, carpeted floor, itison and all types of PVC floor coverings), for a 5-30 mm layer thickness.

Consumption: approx. 1.5 kg/m² per each mm of layer thickness

25/1

48 bags/pallet

ID: 00629

**LINEA 841 SL****Fast-setting self-levelling floor compound, 3-40 mm, CT/C25/F6/B2 according to SIST EN 13813**

Fast-setting, casein-free (biologically impeccable), polymer cement self-levelling floor compound for indoor use. Ready for foot traffic in 4-6 hours. Suitable for underfloor heating. For levelling of all types of concrete foundations and cement screeds prior to laying the flooring (parquet, wood flooring, ceramic tiles, carpeted floor, itison and all types of PVC floor coverings), for a 3-40 mm layer thickness.

Consumption: approx. 1.8 kg/m² per each mm of layer thickness

25/1

48 bags/pallet

ID: 00631

FLOOR-LEVELLING MORTARS



ALSO FOR OUTSIDE

LINEA 820 M**Floor-levelling mortar, 5-20 mm, CT/C40/F7/B1,5 according to SIST EN 13813**

Polymer cement mortar for new cement coatings of 5-20 mm layer thickness. For levelling old, damaged concrete floors and new cement screeds prior to laying the flooring, for outdoor and indoor use.

Consumption: approx. 20 kg/m² per each cm of layer thickness

30/1

42 bags/pallet

ID: 00634

FLOORING

**LINEA 840 M**

Non-shrinking floor levelling mortar, 5-40 mm, CT/C40/F7/B2 according to SIST EN 13813

Non-shrinking polymer cement mortar for new cement coatings with 5-40 mm layer thickness. For levelling old, damaged concrete floors and new cement screeds prior to laying the flooring, for outdoor and indoor use. Suitable for underfloor heating.

Consumption: approx. 20 kg/m² for a 10 mm thick layer



30/1

42 bags/pallet

ID: 00632

PRIMERS

**EXTRA-STRONG
BONDING LAYER**

**KEMAPOX LINK**

Two-component epoxy bonding bridge

Water-based epoxy resin for impregnation of cement bases, construction of bonding bridge in resurfacing of old concrete with new cement compounds with "fresh-to-fresh" system.

Consumption: 0.1-0.3 kg/m², depending on substrate absorption



28/1

10 kg of component A +
18 kg of component B

ID: 08450



5,6/1

2 kg of component A +
3,6 kg of component B

ID: 08451

KEMALATEX

Polymer dispersion for bonding bridge (bond old-new) for sanitation and over coating of old concrete surfaces

For the preparation of bonding bridge (bond old-new) for installation of composite screed or for installing levelling mortar on prepared and stable old concrete surface. Can be used concentrated or diluted with water in the ratio 1:1. For best results the bonding bridge is prepared as a cement paste, with cement mixing ratio of 1:2.



Consumption: 0.5-0.7 l/m² for bonding layer



10/1

60 plastic cans/pallet

ID: 00327



50/1

12 barrels/pallet

ON ORDER

ID: 00328

**Bulk**

1000 l container

ON ORDER

ID: 00329

FLOORING



POSSIBLE DILUTION OF 1:3

**KEMAGRUND A****Penetration primer for absorbent and low-absorbent mineral surfaces**

Water-based dispersion for priming concrete surfaces, absorbent and low-absorbent mineral surfaces of screeds. Must be diluted with water in the ratio of minimum 1:1 and maximum 1:3 before use.

Consumption: 0.1-0.2 kg/m² depending on surface absorption

**10/1**

60 plastic cans/pallet

ID: 00365

**5/1**

128 plastic cans/pallet

ID: 00364

**1/1**8 plastic cans/cardboard box
72 cardboard boxes/pallet

ID: 00363

INDUSTRIAL FLOORS

RESISTANCE TO ABRASION A9

TAL M KVARC**Mineral dry-shake for enriching concrete floor**

Dry-shake blend with hard minerals for thick structure and suitable mechanical properties of concrete floor and higher abrasion resistance; A9 abrasion resistance (according to EN 13813).

Consumption: 3-5 kg/m² (grey shake), min. 5.0 kg/m² (red, ochre, green, anthracite grey, dark grey, brown or blue shake)

30/1

**ON ORDER,
EXCEPT GREY, RED AND GREEN**
42 bags/pallet

ID: 00818 **grey**
ID: 03209 **dark grey**

ID: 00824 **red**
ID: 00826 **ochre**
ID: 00838 **anthracite grey**
ID: 03217 **brown**

ID: 00825 **green**

ID: 03218 **blue**



FLOORING

RESISTANCE TO ABRASION A6



TAL M KORUND 3

Mineral dry-shake for enriching concrete floors

Dry-shake blend with hard corundum minerals for thick structure and suitable mechanical properties of concrete floor and higher abrasion resistance. A6/AR 0.5 abrasion resistance (according to Böhme/BCA EN 13813).

Consumption: 3-5 kg/m² (grey shake), min. 5.0 kg/m² (red, ochre, green, anthracite grey, dark grey, brown or blue shake)

30/1

ON ORDER, EXCEPT GREY

42 bags/pallet

ID: 00840	grey
ID: 00872	dark grey

ID: 00841	red
ID: 00842	ochre
ID: 03220	anthracite grey
ID: 03221	brown

ID: 00843	green
-----------	-------

ID: 03222	blue
-----------	------

RESISTANCE TO ABRASION A6



TAL M KORUND 10

Mineral coating for enriching concrete floors

Ready-mix of cement, hard quartz and corundum minerals, micro-reinforced fibres and additives, for preparation of cement coating for industrial concrete floor, exposed to high loads and strong abrasion. Approximately 8-10 mm layer thickness of wet mixture. A6 abrasion resistance (according to Böhme EN 13813).

Consumption: 20 kg/m² for a 10 mm thick layer (coating)

30/1

ON ORDER

42 bags/pallet

ID: 00850	grey
ID: 00873	dark grey

ID: 00851	red
ID: 00855	brown

ID: 00852	ochre
ID: 03225	anthracite grey

ID: 00853	green
-----------	-------

ID: 03226	blue
-----------	------



KEMACURE EKO

Liquid concrete curing agent

Polymer-based, solvent- and wax-free agent for treatment of fresh concrete and screed. A substitute for necessary maintenance of fresh concrete surfaces, does not reduce the adhesion of final coatings and adhesives.

Consumption: approx. 200 g/m²



30/1

24 barrels/pallet

ID: 00885

FLOORING



KEMA IMPREGNATOR POWDER

Chemical concrete surface hardener in powder

Special powder concrete hardener, mixed with water in recommended ratio 1:1-1:4. The mixing ratio depends on absorption and intended use. Used for hardening concrete surfaces and strengthening abrasion resistance. Diminishes the absorption of oils and water and increases the resistance of the surface against salt and frost influences.



Consumption: 0.02-0.05 kg/m², usually 1 kg for approx. 50 m²



500/1 **ON ORDER**

1000 l container

ID: 00114



10/1

33 buckets/pallet

ID: 00113

KEMA IMPREGNATOR

Liquid chemical concrete surface hardener

Ready-to-use liquid surface hardener. For hardening concrete floors and strengthening abrasion resistance. Diminishes the absorption of oils and water and increases the resistance of the surface against salt and frost influences.



Consumption: approx. 0.1-0.2 kg of liquid mixture/m²



50/1

12 barrels/pallet

ID: 00287



10/1

60 plastic cans/pallet

ID: 00288

KEMA PP FIBER

Polypropylene fibres for concrete and screed

Polypropylene fibres of various lengths and diameters for improving properties and reducing plastic shrinking in concrete, mortars and screeds, mixtures.



Consumption: 0.9 kg/m³ of concrete, 0.6 kg/m³ of screed



0,91/1 **PP Fiber 3**

20 bags/cardboard box

ID: 00268



0,91/1 **PP Fiber 6**

12 bags/cardboard box

ID: 00269

FLOORING

EPOXY AND POLYURETHANE FLOORING AND COATING

SURFACE PREPARATION

**KEMAPOX FILL 1000****Epoxy injection resin**

Two-component, extremely liquid, highly-adhesive, low-viscosity epoxy resin for injecting and bonding of construction elements. Suitable for use with low-pressure gun on vertical surfaces and surface sealing, and reattaching of substrates on horizontal surfaces.

Consumption: 0.3-0.5 kg/m², depending on crack width and depth

**26/1**

20 kg of component A +
6 kg of component B

ID: 08500

**3,9/1**

3,0 kg of component A +
0,9 kg of component B

ID: 08497

KEMAPUR FILL 1150**Polyurethane injection resin**

Elastic, transparent, two-component polyurethane resin for injecting and bonding of construction elements. Used for filling wet and dry cracks and construction elements, strengthening in restoration of older objects, sealing of cracks in underground areas and tunnels.

Consumption: 0.3-0.5 kg/m², depending on crack width and depth

**17,5/1****ON ORDER**

12,5 kg of component A +
5 kg of component B

ID: 01822

**3,5/1**

2,5 kg of component A +
1 kg of component B

ID: 02535

**KEMAPOX GRUND 2000****Impregnation epoxy coat**

Transparent, two-component epoxy coating for impregnating cement surfaces, preparation of epoxy levelling compounds and epoxy mortars. Suitable for filling with quartz sand when preparing thin-layer epoxy mortars due to low viscosity.

Consumption: 1. Pre-coat before building epoxy grounds, strengthening grounds, anti-dust coating, bonding layer: 0.3-0.5 kg/m² for one coat, depending on the absorption of the foundation;
2. Epoxy levelling compound (up to 2 mm levelling): 1.4-1.6 kg/m² for a 1 mm of layer thickness (resin : sand mixing ratio = 1:1);
3. Epoxy mortar (15-20 mm): 2.2 kg/m² for a 1 mm of layer thickness (resin : sand mixing ratio = 1:7).

**28/1**

20 kg of component A +
8 kg of component B

ID: 08478

**7/1**

5 kg of component A +
2 kg of component B

ID: 08477



**FILLED WITH QUARTZ FLOUR****KEMAPOX GRUND 2010****Filled epoxy priming agent**

Two-component, filled, medium-viscosity epoxy resin for impregnating/priming cement surfaces and preparation of epoxy levelling. Used for priming cement-bound surfaces, filling capillaries and pores, reinforcement and thin-layer levelling, as an "old-new" bonding layer. Suitable for indoor and outdoor use.



Consumption:

1. Pre-coat before installation of epoxy floorings, strengthening grounds, anti-dust coating, bonding layer: 0.3-0.5 kg/m² for one coat, depending on the surface absorption
2. Epoxy levelling compound (up to 2 mm levelling): 1.4-1.6 kg/m² for a 1 mm of layer thickness (resin : sand mixing ratio = 1 : 1)
3. Epoxy mortar (15-20 mm): 2.2 kg/m² for a 1 mm of layer thickness (resin : sand mixing ratio = 1 : 7)

**25/1**

20 kg of component A +

5 kg of component B

ID: 08460

UP TO 8% MOISTURE**KEMAPOX GRUND 2040****Epoxy coating surface with up to 8% moisture**

Two-component epoxy coating and old-new bonding, especially suitable for cement surfaces with higher moisture content, such as constructions without hydroinsulation.



Consumption: 0.3-0.5 kg/m², depending on surface absorption

**32/1**

20 kg of component A +

12 kg of component B

ID: 08483

FLOORING

THIN-LAYER EPOXY SYSTEMS



KEMAPOX FINAL 6000

Basic thin-layer epoxy coating

Two-component pigmented epoxy resin for installation of thin-layer coating. Used for installation of a thin-layer coating on cement and other cement-bound surfaces for light loads, such as warehouses, workshops, garages, parking houses, etc. For buildings with higher mechanic loads there is also a possibility of installation with an additional third component: the EPOXY SAND ES dry quartz sand, which significantly increases mechanical properties. The product is available in different color tones.

Consumption: Thin-layer smooth epoxy coating: 0.4-0.5 kg/m² for two applications (detailed information in the technical sheet)

24/1

20 kg of component A +
4 kg of component B

6/1

5 kg of component A +
1 kg of component B

INCREASED CHEMICAL RESISTANCE



KEMAPOX FINAL 6100 CHEMRES

Chemically resistant thin-layer epoxy coating

Two-component pigmented epoxy resin for installation of thin-layer coating, which is highly chemically resistant. Used for installation of a thin-layer coating on cement and other cement-bound surfaces for light loads, such as warehouses, workshops, garages, parking houses, working halls, industrial laboratories, waste waters, and places where high chemical resistance is requested. For buildings with higher mechanic loads there is also a possibility of installation with an additional third component: the EPOXY SAND ES dry quartz sand, which significantly increases mechanical properties. The product is available in different color tones.

Consumption: Thin-layer smooth epoxy coating: 0.4-0.5 kg/m² for two applications (detailed information in the technical sheet)

25/1

20 kg of component A +
5 kg of component B

WATER-BASED



KEMAPOX FINAL 6500 AQUA

Water-based thin-layer epoxy coating

Two-component pigmented epoxy resin for vapor-permeable thin-layer coating installation. Used for installation of a thin-layer coating on cement and other cement-bound surfaces for light loads, such as warehouses, workshops, garages, parking houses, and places where a higher moisture content in cement surface is expected (e.g. in buildings without waterproofing). The product is available in different color tones.

24/1

20 kg of component A +
4 kg of component B

6/1

5 kg of component A +
1 kg of component B

NEW PACKAGING



Consumption: Thin-layer smooth epoxy coating: 0.2-0.4 kg/m² (detailed information in the technical sheet)

FLOORING



SELF-LEVELLING EPOXY SYSTEMS

KEMAPOX FINAL 5000**Basic self-levelling epoxy compound**

Two-component pigmented epoxy resin for installation of self-levelling flooring finishes. Used for installation of self-levelling floorings on cement and other cement-bound surfaces for normal to medium-high loads, such as warehouses, work halls, garages, etc. The product is available in different color tones.



Consumption: Self-levelling epoxy flooring, thickness approx. 1.5 mm:
approx. 2 kg/m² (detailed information in the technical sheet)

24/1

20 kg of component A +
4 kg of component B

INCREASED CHEMICAL RESISTANCE**KEMAPOX FINAL 5100 CHEMRES****Chemically resistant self-levelling epoxy compound**

Two-component pigmented epoxy resin for preparation of a self-levelling flooring finish, which is highly chemically resistant. Used for installation of self-levelling floorings on cement and other cement-bound surfaces for normal to medium-high loads, such as laboratories, hospitals, chemical industry, work halls, garages, production premises, etc., and places where high chemical resistance is requested. The product is available in different color tones.



Consumption: Self-levelling epoxy flooring, thickness approx. 1.5 mm:
approx. 2 kg/m² (detailed information in the technical sheet)

25/1

20 kg of component A +
5 kg of component B

EPOXY VARNISHES

SOLVENT FREE**KEMAPOX FINAL 4000****Glossy transparent epoxy coating**

Two-component glossy transparent epoxy resin for lacquering and protection of prepared epoxy flooring, for protection of the prepared epoxy flooring with decorative leaves, which due to its properties significantly increases chemical resistance of the flooring and its wear resistance. Does not contain solvents, has low-viscosity and is non-filled. Used for surfaces in buildings with chemical and mechanical loads, such as warehouses, laboratories, food industry, work halls, airports, etc. Depending on the implementation and number of applications it can form either distinctly smooth or an anti-slip surface.



Consumption: 0.12-0.2 kg/m² in one application

**8/1**

5 kg of component A +
3 kg of component B

ID: 08466

FLOORING

WATER-BASED

KEMAPOX FINAL 4500 AQUA M**Water-based matte epoxy finishing layer**

Two-component water-based matte epoxy resin for matte finish and/or protection of prepared epoxy flooring with decorative leaves. Used for appropriately prepared surfaces in buildings with normal chemical and mechanical loads, such as warehouses, production halls, offices, stores, etc.

**10/1**

6 kg of component A +
4 kg of component B

ID: 08467



Consumption: 0.12-0.2 kg/m² in one application on a smooth surface

KEMAPOX FINAL 4000 QC**Glossy, finish, epoxy resin for "quartz color" systems**

Two-component, glossy, transparent epoxy resin for finishing layer in "quartz color" systems. By using the finishing resin the epoxy coating is completely sealed and therefore, completely liquid-tight. It offers excellent chemical and mechanical resistance of the flooring.

**7,5/1**

5 kg of component A +
2,5 kg of component B

ID: 08468



Consumption: 0.3-0.5 kg/m² for one application

FLOORING



ADDITIONAL PRODUCTS FOR EPOXY SYSTEMS

EXTRA-STRONG
BONDING LAYER

KEMAPOX LINK

Two-component epoxy bonding bridge

Water-based epoxy resin for impregnation of cement bases, construction of bonding bridge in resurfacing of old concrete with new cement compounds with "fresh-to-fresh" system.



28/1

10 kg of component A +
18 kg of component B

ID: 08450



5,6/1

2 kg of component A +
3,6 kg of component B

ID: 08451

Consumption: 0.1-0.3 kg/m², depending on substrate absorption



EPOXY SAND

Dry quartz sand for epoxy floors

Dry quartz sand for epoxy floors of various grain sizes and colours. Flame-dried quartz sand with high hardness, chemical resistance and suitable grain size. Ideal for mixing with epoxy resin and as a powder for epoxy mortars and floors.

EPOXY SAND Characteristic

ES	Dry quartz sand, natural colours, various grain sizes ES 30 (0,1–0,3 mm), ES 80 (0,3–0,8 mm), ES 120 (0,7–1,2 mm)
OC	Dry quartz sand, single-coloured, various colours, grain size 0,3–0,8 mm
ESC	Dry quartz sand, multi-colour, various colour mixtures, grain size 0,3–0,8 mm

25/1

40 bags/pallet

EPOXY SAND ES

EPOXY SAND OC

EPOXY SAND ESC

Consumption: 0.06-0.5 kg/m² for mixing with resin, 1.0-2.5 kg/m² for powdering

FLOORING

KEMAPOX DENS SM**Additive for increasing the thixotropy of epoxy resin**

Special additive for increasing the thixotropy of epoxy resins in building.

**1/1**

plastic bucket

ID: 08452



Consumption: depending on the purpose of use (detailed information in the technical sheet)

KEMAPOX CHIPS**Decorative flakes**

Decorative flakes for preparation of decorative self-levelling floor.

0,5/1

plastic bucket

white, black, blue, red

Consumption: depends on desired floor appearance

KEMAPOX SOLVENT**Solvent for epoxy resins**

Diluent for KEMAPOX epoxy resins.

**10/1**

56 tin cans/pallet

ID: 08471

**1/1**

6 tin cans/box

72 boxes/pallet

ID: 08470



FLOORING



price group									
G1	1015 1017		3009* 3016		5022	6011	7001 7003 7008 7012 7032* 7035* 7040*	8004* 8011 8016	9005* 9010*
G2	1000 1016 1001* 1018 1002 1019 1003 1020 1004 1021 1005 1023 1006 1024 1007 1028 1011 1032 1012 1033 1013 1034 1014 1037	2000 2001 2002 2003 2004 2008 2009 2010 2011 2012	3000 3014 3002 3015 3003 3017 3004 3018 3005 3020 3007 3022 3011 3027 3012 3028 3013* 3031	4001 4002 4003 4004 4005 4006 4007 4008 4009 4010	5000 5012 5001 5013 5002 5014 5003 5015 5004 5017 5005 5018 5007 5019 5008 5020 5009 5021 5010* 5023 5011 5024	6000 6017 6001* 6018 6002 6019 6003 6020 6004 6021 6005 6024 6006 6025 6008 6026 6009 6027 6010 6028 6012 6029 6013 6032 6014 6033 6015 6034 6016 6037	7000 7026 7002 7030* 7004 7031 7005 7033 7006 7034 7009 7036 7010 7037* 7011 7038 7013 7039 7015 7042 7016 7043 7021 7044 7022 7045 7023 7046 7024 7047*	8000 8015 8001 8017 8002 8019 8003 8022 8007 8023 8008 8024 8012 8025 8014 8028	9001 9002 9003 9004 9011 9016 9018

* Standard RAL colours

TABLE OF PRICE RANGES (G1 AND G2) AND STANDARD RAL COLOUR CHART

Standard RAL colours (labelled with *) are deliverable in 5 work days.

Non-standard RAL colours are deliverable in 14 work days.

1.5 €/kg added for RAL colors from G2 price group.

Minimal order:

STANDARD COLOURS – 1 set

NON-STANDARD COLOURS – 4 sets. 1.5 €/kg added for orders under 4 sets.

KEMAPUR FILL 1150, is delivered upon prior arrangement with sales department.

ALSO SEE-

Tools, cleaners and other accessories for installation of epoxy systems can be found among the additional products on pages 115, 116, 117 and 118.





QUARTZ SAND

- CONSTRUCTION
- SPORT AND RECREATION
- GARDEN
- WATER FILTRATION
- INDUSTRY

QUARTZ SAND

CONSTRUCTION

SAND FOR CONCRETE



QUARTZ SAND FOR CONCRETE 0 - 30 MM

For preparation of concrete

Quartz sand and gravel are distinguished by high solidity, hardness and chemical durability, which make the product an important aggregate for concretes projected to achieve those additional properties. Quartz is also distinguished by other excellent mechanic characteristics.



Bulk

ID: 06010

GRAVEL FOR TAMPON 0-40 MM



Bulk

ID: 06011

SAND FOR MORTAR AND PLASTER



FINE BUILDING SAND

For preparation of fine plasters

Fine quartz sand with 0.063-1 mm grains size, for preparation of fine exterior and interior plasters. Naturally moist.



40/1

30 bags/pallet

ID: 06600



25/1

40 bags/pallet

ID: 06610



Bulk

ID: 06609



QUARTZ SAND



WHITE FINE BUILDING SAND

For preparation of fine white plasters

Fine quartz sand with decorative white grains, 0.063-1 mm in size, for preparation of fine decorative white exterior and interior plasters, white adhesive mortar, and restoration works. Naturally moist.



25/1

40 bags/pallet

ID: 06612



Bulk

ID: 06605



SAND FOR MORTAR AND PLASTER

For coarse mortar and plaster

Ground quartz sand of 0-4 mm grains size. Suitable for coarse mortar for masonry, coarse plaster for interior and exterior surfaces, and fine-grained concrete. Naturally moist.



40/1

30 bags/pallet

ID: 06601



25/1

40 bags/pallet

ID: 06611



Bulk

ID: 06606



QUARTZ SAND

SAND FOR GROUTING OF PAVING UNITS



FUGA SAND 80

For grouting of paving units, washed tiles, etc.

Quartz sand for grouting of paving units, floor tiles, washed tiles, etc., of 0.1-0.8 mm grain sizes.



40/1

30 bags/pallet

ID: 06111



25/1

40 bags/pallet

ID: 06110

FUGA SAND 200

For grouting of paving units, washed tiles, etc.

Quartz sand for grouting of paving units, floor tiles, washed tiles, etc., of 1-2 mm grain sizes.



40/1

30 bags/pallet

ID: 06124



25/1

40 bags/pallet

ID: 06123

SAND FOR GENERAL USE



WHITE DRY QUARTZ SAND

Dry quartz sands of different grain sizes

The quartz sand is a perfect aggregate for preparation of mortar and fine-grained concrete for general purposes. Our specialty are dry fractions of a completely white quartz sand of different grain sizes, which produce decorative mortar and high quality plasters when using white cement.



40/1 (0,063 - 0,355 mm)

40 bags/pallet

ID: 06661



40/1 (0,063 - 1,0 mm)

40 bags/pallet

ID: 06662



40/1 (0,5 - 1,5 mm)

40 bags/pallet

ID: 06663



40/1 (0,2 - 1,7 mm)

40 bags/pallet

ID: 06664

QUARTZ SAND

KEMA

SPORT AND RECREATION

SAND FOR PREPARING FIELD WITH ARTIFICIAL GRASS (soccer, tennis, golf)



Used for fields with artificial grass

Fields with artificial grass are multi-purpose surfaces for sports and they help prolong the training processes, especially in the winter. Even though their comfort and low costs of maintenance make them one of more popular synthetic surfaces, those fields have to be regularly maintained otherwise they become less water-permeable, the quartz sand becomes too firm, which leads to slippery surface and consequently shorter life-span of the field.

WHITE DRY QUARTZ SAND 0,1 - 0,8 MM



25/1
40 bags/pallet

ID: 06636



Bulk

ID: 06644



Big-bag

ID: 06645

DRY QUARTZ SAND 0,4 - 0,9 MM



25/1
40 bags/pallet

ID: 06646



Bulk

ID: 06647



Big-bag

ID: 06648

DRY QUARTZ SAND 0,9 - 1,4 MM



25/1
40 bags/pallet

ID: 06649



Bulk

ID: 06650



Big-bag

ID: 06651

QUARTZ SAND

SAND FOR VOLLEYBALL COURTS



SAND FOR VOLLEYBALL COURTS (BEACHVOLLEY SAND)

Quartz sand for volleyball courts

Fine quartz sand, decorative white color. Due to its grain size structure it is perfect for volleyball and other sports court, as well as playgrounds. Even after rain the sand remains free-flowing and thus appropriate for immediate continuation of the game. Given the proper field drainage the sand is easy and simple to maintain, which means it can be used for many years. Naturally moist.



Bulk

ID: 06114

SAND FOR BOCCIE COURTS



WHITE QUARTZ SAND 1 - 2 MM

Dry quartz sand for bocce courts

Bocce represents a common form of outdoor recreation. To ensure the compliance of bocce court and game with the conditions, an appropriate surface, which enables the 1 kg metal ball to travel smoothly to the smaller ball, is also needed. Naturally moist.



25/1

40 bags/pallet

ID: 06658



Bulk

ID: 06626

SAND FOR MAINTENANCE OF SPORTS GREENS (soccer, tennis, golf)



For maintenance and care of green surfaces

A beautiful grass surface needs plenty of effort and a proper use of maintenance products. Airing the grass surface with quartz sand is one of the main measures to achieve beautiful green surfaces. A proper grain size structure of the natural quartz sand from Kema loosens the soil and increases its water-permeability, which retains nutrients in the lawn to acquire moisture. Used not only for lawns around the house, but also for soccer fields, golf courts and other green surfaces.

DRESSING SAND

Quartz sand for levelling and maintaining the grass areas

Quartz sand for restoration and maintenance of grass areas, such as golf courses, soccer fields and other lawns, of 0.1-0.8 mm grain sized. Naturally moist.



40/1

30 bags/pallet

ID: 06113



25/1

40 bags/pallet

ID: 06112



QUARTZ SAND



WHITE QUARTZ SAND 0,1 - 0,8 MM



Bulk

ID: 06652



Big-bag

ID: 06653

QUARTZ SAND 0,4 - 1,4 MM



Bulk

ID: 06654



Big-bag

ID: 06655

QUARTZ SAND 0,9 - 1,4 MM



Bulk

ID: 06656



Big-bag

ID: 06657

GARDEN

SAND FOR CHILDREN'S PLAYGROUNDS AND SANDBOXES



BABY SAND

White sand for sandboxes

Children are often playing in sandboxes and that is why a quality and carefully selected sand is especially important. Such sand offers countless possibilities of children's creativity and has no negative impacts on children's health. The sand for children's play (BABY SAND) represents all those qualities with its grainy structure. Its white color, two-time wash in the production process and its cleanliness also satisfies parents. Kema's sand for children is in compliance with the demands and recommendation of the expert group for preparation of guidelines for assessment of suitability of sand use in sandboxes for children (Strokovna skupina za pripravo smernic za oceno primernosti uporabe mivke v otroških peskovnikih), formed by The National Institute of Public Health of the Republic of Slovenia.



25/1

40 bags/pallet

ID: 06613



The report on the sand examination
by the Institute of Public Health
Maribor, Institute of Environmental
Protection.



QUARTZ SAND

SAND FOR MAINTENANCE GREENS (lawns)



For maintenance and care of green surfaces

The lawn around the house is the pride and joy of home owners; however, mowing grass is not enough for its maintenance. With all the care, ranging from watering, mowing and removing weeds, we must not forget to air the green cover, where quartz sand for sand treatment is helpful. Due to its excellent flowability and proper grain size structure, the Dressing sand ensures simple and quality sand treatment of all grass surfaces, and its convenient packaging enables easy handling.

DRESSING SAND

Quartz sand for levelling and maintaining the grass areas

Quartz sand for restoration and maintenance of grass areas, such as golf courses, soccer fields and other lawns, of 0.1-0.8 mm grain sized. Naturally moist.



40/1

30 bags/pallet

ID: 06113



25/1

40 bags/pallet

ID: 06112

SAND FOR GARDENING



For gardening

To prepare the growing grounds it is important that the grounds are not too heavy or too wet. If we install drainage with a layer of sand which loosens the grounds, this also enables an easier development of roots and more appropriate ratio between water and air. This way the area around our home will blossom in every sense of the word.

WHITE QUARTZ SAND 0,2 - 1,7 MM



25/1

40 bags/pallet

ID: 06660



Bulk

ID: 06608

QUARTZ SAND



WATER FILTRATION

SAND FOR FILTRATION AND PURIFICATION OF WATER



FILTER SAND

For filtration and purification of water

Quartz filter sands with various grain sizes in accordance with EN 12904 and DIN 4924 standards. Quartz filter sands of exceptional chemical purity (96-99% SiO₂) are quarried from carefully selected quartz deposits. Free of organic impurities, of proper grain sizes and incredible mechanical properties. Quartz filter sands provide ideal conditions for water filtration in all kinds of water filters.



FILTER NATURAL MOIST QUARTZ SAND

For filtration and purification of water



25/1 FN315 (2,0 - 3,15 mm)
40 bags/pallet

ID: 06503



25/1 FN560 (3,15 - 5,6 mm)
40 bags/pallet

ID: 06504



25/1 FN800 (5,6 - 8,0 mm)
40 bags/pallet

ID: 06505



25/1 FN1600 (8,0 - 16 mm)
40 bags/pallet

ID: 06506



Big-bag FN315 (2,0 - 3,15 mm)

ID: 06553



Big-bag FN560 (3,15 - 5,6 mm)

ID: 06554



Big-bag FN800 (5,6 - 8,0 mm)

ID: 06555



Big-bag FN1600 (8,0 - 16 mm)

ID: 06556

FILTER WHITE MOIST QUARTZ SAND

For filtration and purification of water



25/1 FB80 (0,1 - 0,8 mm)
40 bags/pallet

ID: 06530



25/1 FB150 (0,5 - 1,5 mm)
40 bags/pallet

ID: 06534



25/1 FB170 (0,2 - 1,7 mm)
40 bags/pallet

ID: 06531



25/1 FB200 (1,0 - 2,0 mm)
40 bags/pallet

ID: 06533



Big-bag FB80 (0,1 - 0,8 mm)

ID: 06580



Big-bag FB150 (0,5 - 1,5 mm)

ID: 06584



Big-bag FB170 (0,2 - 1,7 mm)

ID: 06581



Big-bag FB200 (1,0 - 2,0 mm)

ID: 06583

QUARTZ SAND



FILTER NATURAL DRY QUARTZ SAND

For filtration and purification of water



25/1 FN315S (2,0 - 3,15 mm)
40 bags/pallet

ID: 06522



25/1 FN560S (3,15 - 5,6 mm)
40 bags/pallet

ID: 06524



25/1 FN800S (5,6 - 8,0 mm)
40 bags/pallet

ID: 06527



Big-bag FN315S (2,0 - 3,15 mm)

ID: 06515



Big-bag FN560S (3,15 - 5,6 mm)

ID: 06559



Big-bag FN800S (5,6 - 8,0 mm)

ID: 06565

FILTER WHITE DRY QUARTZ SAND

For filtration and purification of water



25/1 FB80S (0,1 - 0,8 mm)
40 bags/pallet

ID: 06547



25/1 FB150S (0,5 - 1,5 mm)
40 bags/pallet

ID: 06550



25/1 FB170S (0,2 - 1,7 mm)
40 bags/pallet

ID: 06564



25/1 FB200S (1,0 - 2,0 mm)
40 bags/pallet

ID: 06568



Big-bag FB80S (0,1 - 0,8 mm)

ID: 06548



Big-bag FB150S (0,5 - 1,5 mm)

ID: 06561



Big-bag FB170S (0,2 - 1,7 mm)

ID: 06566



Big-bag FB200S (1,0 - 2,0 mm)

ID: 06569

QUARTZ SAND

KEMA

INDUSTRY

SAND FOR SANDBLASTING



Sand for sandblasting in industry

Sandblasting is treating the surface with abrasive material. Both in construction and in industry the use of quartz sand as sandblasting agent is quite common as it is a natural material and does not harm the environment. When sandblasting a surface all poorly-attached particles, as well as algae and dirt gathered on different surfaces are removed. When sandblasting we have to have a prior knowledge of the desired result and then choose the selected fraction accordingly. The surface can namely only be cleaned, smoothed out or made coarser for the application of new materials.



WHITE DRY QUARTZ SAND 0,1 - 0,8 MM

White dry quartz sand



25/1

40 bags/pallet

ID: 06636

WHITE DRY QUARTZ SAND 0,5 - 1,5 MM

White dry quartz sand



25/1

40 bags/pallet

ID: 06637

WHITE DRY QUARTZ SAND 0,2 - 1,7 MM

White dry quartz sand



25/1

40 bags/pallet

ID: 06638

WHITE DRY QUARTZ SAND 1,0 - 2,0 MM

White dry quartz sand



25/1

40 bags/pallet

ID: 06639



AUXILIARY PRODUCTS

- AGENTS FOR INJECTING AND SURFACE PROTECTION
- ADDITIVES FOR CONCRETE AND CEMENT MORTAR
- TOOLS AND AUXILIARY PRODUCTS

AUXILIARY PRODUCTS

AGENTS FOR INJECTING AND SURFACE PROTECTION



KEMAFOB

Silicone water-repellent impregnation

Transparent silicone water-repellent impregnation and primer for mineral surfaces such as concrete, mineral plasters, roof tiles, bricks, gas concrete, silicate brick, natural and artificial stones, including joints, mineral colour facades, etc.

Consumption: 0.2-1.0 l/m², depending on surface absorption



10/1

56 tin cans/pallet

ID: 00225



1/1

6 tin cans/box

72 boxes/pallet

ID: 00224

WATER-BASED



KEMAFOB AQUA

Water-based water-repellent impregnation

Transparent water-repellent impregnation and primer for the reduction of capillary absorption of building materials such as concrete, mineral plasters, roof tiles, bricks, gas concrete, silicate brick, natural and artificial stones, including joints, mineral colour facades, etc.

Consumption: 0.2-1.0 l/m², depending on surface absorption



10/1

56 tin cans/pallet

ID: 00237



1/1

6 tin cans/box

72 boxes/pallet

5,80 €/kos

ID: 00236

KEMASOL

Emulsion for setting up a capillary moisture barrier

Silicone emulsion for setting capillary moisture barrier in brick, stone and mixed walls.

Consumption: approx. 6 to 8 l/m for a 40 cm thick wall and approx. 20 l/m² of wall cross-section (water solution)



50/1

12 barrels/pallet

ID: 00210



10/1

60 plastic cans/pallet

ID: 00203

AUXILIARY PRODUCTS

**CONCENTRATE 1:14****KEMASOL MICRO****Micro-emulsion concentrate for setting up a capillary moisture barrier**

Silicone solvent-free micro-emulsion for preventing capillary moisture in brick, stone and mixed walls, and with highly porous concrete, even in cases of high moisture. Necessary to dilute at ratio 1:14!

*Consumption: approx. 1.33 l of concentrate (20 l of water solution) per 1 m² of wall cross-section;
approx. 0.53 l/m for a 40 cm thick wall*

**10/1**

60 plastic cans/pallet

ID: 00135

**1/1**8 plastic cans/cardboard box
72 cardboard boxes/pallet

ID: 00134

KEMA EXPAND**Powdered chemical admixture for shrinking compensation and plasticising**

Powdered admixture for preparation of grouting and pourable mortar, cement injection suspensions or concretes to compensate shrinking. Suitable for preparation of cement suspensions for various injecting purposes, grouting mortars used for fitting machines, equipment, crane lines, permanent ground anchors, filling contacts and preparation of special sanitation mortars.



Consumption: 0.3-2.0% of cement weight (2% for compounds and mortars)

**5/1****ON ORDER**5 bags/cardboard box
30 cardboard boxes/pallet

ID: 03699

AUXILIARY PRODUCTS

ADDITIVES FOR CONCRETE AND CEMENT MORTAR



KEMAMENT L 10

Universal, chloride-free melamine super-plasticiser for preparing concretes, mortars and prestressed concretes

Universal super-plasticiser which works with all types of cement. Suitable for prefabrication, prestressed concretes, and heated concretes. Works well with crushed aggregate.



10/1

60 plastic cans/pallet

ID: 00446



5/1

128 plastic cans/pallet

ID: 00448



1/1

8 plastic cans/cardboard box

72 cardboard boxes/pallet

ID: 00447



50/1

12 barrels/pallet

ID: 00452



Bulk

ON ORDER

1000 l container

ID: 00450

Consumption: 1-2% of cement weight for concrete preparation; 2.5-5% of mortar binder



KEMAMENT VDP

Highly-concentrated admixture for waterproof concretes and screeds

The admixture for waterproof elements of "white tub", heavy beams, supporting walls, in bridges construction and construction in littoral areas where water resistance is required. Used for transport, visible, pump, self-compacting and high performance concretes, prefabricated concrete parts, and screeds of higher strength.



10/1

60 plastic cans/pallet

ID: 04223



50/1

12 barrels/pallet

ID: 04214



Bulk

1000 l container

ID: 004213

Consumption: 1.5-2.0 kg/m³



AUXILIARY PRODUCTS

**KEMAMENT HIPER F****Superfluid**

Strong hyper-plasticiser with no negative effect on cement segregation. Assures long time of workability and high reduction of mixing water. Suitable for transport concretes in summer, self-compacting and high performance concretes.



10/1 **ON ORDER**

60 plastic cans/pallet

ID: 04192



50/1 **ON ORDER**

12 barrels/pallet

ID: 04191



Bulk **ON ORDER**

1000 l container

ID: 04190



Consumption: 0.2-1.5% of cement weight

**KEMAZIM OC****Chloride-free hardening accelerator**

Admixture for concreting in winter and accelerating cement binding, which enables concreting at -10°C and at least 10°C of concrete temperature during construction.



14/1

60 plastic cans/pallet

ID: 04315



7/1

128 plastic cans/pallet

ID: 04316



1/1

8 plastic cans/cardboard box

72 cardboard boxes/pallet

ID: 00414



Bulk **ON ORDER**

1400/1

ID: 00412



50/1

12 barrels/pallet

ID: 04102



Consumption: 1.0-2.0 % of cement weight

AUXILIARY PRODUCTS

KEMA MIKROSILIKA

Powdered anti-corrosion admixture for amorphous-SiO₂-based concretes and mortars (microsilica, silica fume)

Powdered admixture for improved workability, higher corrosion resistance, higher freezing and defrosting resistance, improved early and final firmness, reduced "bleeding" effect, improved water-resistance, reduction of capillary absorption and improvement of gas tightness. Effective as anti-corrosion additive to concretes and cement mortars: in fertilizers industry, food processing industry, on stockbreeding farms, in chemical industry, on objects near sea, and in other corrosive atmospheres.



Consumption: 5-10 % of cement weight



17,5/1

30 bags/pallet

ID: 00390

KEMA NONSHRINK

Liquid chemical admixture for reduction of shrinkage

Concrete and cement mortar additive for effective reduction of desiccation-caused shrinking. Reduces shrinking up to 80% after 28 days, and up to 50% after one year (or more). Suitable for construction concretes and concretes used for reducing cracks, due to desiccation and insufficient care of the surface.



10/1

60 plastic cans/pallet

ID: 04263



50/1

12 barrels/pallet

ID: 04262



Consumption: 2% of cement weight, 6-8 kg/m³ of concrete



Bulk

ON ORDER

1000 l container

ID: 04261

KEMA PP FIBER

Polypropylene fibres for concrete and screed

Polypropylene fibres of various lengths and diameters for improving properties and reducing plastic shrinking in concrete, mortars and screeds, mixtures.



0,91/1

PP Fiber 3

20 bags/cardboard box

ID: 00268



0,91/1

PP Fiber 6

12 bags/cardboard box

ID: 00269

Consumption: 0.9 kg/m³ of concrete, 0.6 kg/m³ of screed

AUXILIARY PRODUCTS



TOOLS AND AUXILIARY PRODUCTS

**ARTCOLOR CLEANER GEL****Concentrated cleaning gel for removal of epoxy mortar residues**

ARTCOLOR CLEANER GEL is a cleaning gel used for removal of epoxy mortar residues and dirt from the surface of ceramic tiles, porcelain and glass mosaic, and all types of natural stone. Also suitable for removing stains and cleaning very dirty floors and ceramic coverings.

Consumption: 10 - 15 m²/l



0,75/1

12 plastic cans/cardboard box

44 cardboard boxes/pallet

ID: 06787

**KEMAPOX WHIPE WHITE****Fine white felt pad**

Interchangeable fine white felt pad used for cleaning of epoxy grout. After application of undiluted ARTCOLOR CLEANER, which has to sit for 10-15 minutes, use the white felt pad KEMAPOX WHIPE to clean the surface.



1/1

10 pcs/box

ID: 06789

**KEMAPOX WHIPE BLACK****Rough black felt pad**

Interchangeable rough black felt pad used for cleaning of epoxy grout. After application of undiluted ARTCOLOR CLEANER, which has to sit for 10-15 minutes, use the black felt pad KEMAPOX WHIPE to clean the surface.



1/1

10 pcs/box

ID: 06851

AUXILIARY PRODUCTS

CLEANING FLOAT

Square trowel for cleaning with ARTCOLOR CLEANER GEL

Cleaning set for surfaces where KEMAPOX LF or KEMAPOX ARTCOLOR were used. Includes a square trowel for cleaning with two interchangeable felt pads.



1/1 pcs

ID: 06850

KEMAFLEX PE X10

Polyethylene round foam profile for joints with a 10 mm diameter

Round profile consisting of closed cell PE-foam is moisture- and waterproof. Elastic, flexible, age-resistant and compatible with all other sealing compounds. In accordance with DIN 18540 standard. Used for making and filling of dilatation joints prior to the final sealing with permanently elastic compounds.



100 m
10 pcs/box

ID: 03389

INJECTION PACKERS

High-pressure packer

Packer for high- and low-pressure injection of concrete and synthetic resins.



1/1 90 mm

ID: 03952



1/1 115 mm

ID: 03951

AUXILIARY PRODUCTS



SPIKE ROLLER

Roller for removal of air bubbles from coatings

Spike roller for removing trapped air bubbles and preventing unevenness when applying epoxy coatings.



1/1 250 mm

ID: 03959



1/1 500 mm

ID: 03933

SPIKE SOLES

Soles for walking on freshly applies resins

Slippers with spike soles for walking on freshly deposited resin layers.



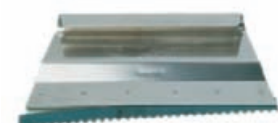
1/1 pair

ID: 03957

ALUMINIUM SPREADER

Application spreader

Light aluminium spreader for application of changeable toothed blades of adhesives and coatings.



1/1 280 mm

ID: 03956

AUXILIARY PRODUCTS

S4



Depth of the teeth (mm)	5,05
Distance between the teeth (mm)	10,3
Width tooth (mm)	0,1
Angle°	90

S2



Depth of the teeth (mm)	3,35
Distance between the teeth (mm)	4,2
Width tooth (mm)	0,1
Angle°	60

R2



Depth of the teeth (mm)	5,00
Distance between the teeth (mm)	4,0
Width tooth (mm)	2,0

R1



Depth of the teeth (mm)	3,00
Distance between the teeth (mm)	4,0
Width tooth (mm)	1,5

TOOTHED BLADE

Blade for coatings application

A tool for application and spreading of various epoxy resins.



1/1 **S4 280 mm**

ID: 03974



1/1 **S2 280 mm**

ID: 03975



1/1 **R2 560 mm**

ID: 03976



1/1 **R1 560 mm**

ID: 03977

LARGE-SURFACE SCRAPER

Application scraper

Stainless steel application scraper for assembling two toothed blades. Available with handle holder.



1/1 **560 mm**

ID: 03954



VELOUR ROLLER

Insert velour roller

Roller with velour fibers for application of coatings based on epoxy and PU-resins.



1/1 **250 mm**

ID: 03971



AUXILIARY PRODUCTS

**ROLLER HANDLE****Plastic roller handle**

Handle for placements of rollers for application of coatings on different surfaces. The handle can also be mounted on the extension.



1/1 250 mm

ID: 03972

**KEMAPOX CLEANER****Tool cleaner**

For cleaning the tools used for preparation and application of KEMAPOX epoxy resins.



10/1

56 tin cans/pallet

ID: 08473



1/1

6 tin cans/box

72 boxes/pallet

ID: 08472

**PVC BUCKET 18.5 L****Plastic bucket**

Plastic bucket with volume of 18.5 L for preparation and mixing of different compounds.



1/1 18,5 l

ID: 03973

**HOLKER PROFILE 30/100/2500****Profile for fillet weld**

Profile, made from quality PVC with very low relative density, used for preparation of durable, tightly and clean connection wall–floor (fillet weld), for example on balconies, terraces, in industrial objects, basement garages, as well into laboratories. Advantage the use of profile in opposite with classic making of fillet is accuracy and equability of joint wall–floor. HOLKER PROFILE can be over-painted with epoxy, polyurethane or acryl paint.



1/1 2,5 m (30/100/2500)

ID: 03966

AUXILIARY PRODUCTS



mixer with M14 thread



mixer with 6-edge mounting part

MIXING HEAD FOR 2K COMPOUNDS

Special mixer for epoxy, PU and self-levelling compounds

Two mixing heads used with mixing tools with M14 chuck or regular drilling machines, suitable for mounting extensions with 6-edge part. A special construction of the mixing head reduces the input of air and air bubbles when mixing epoxy and PU compounds, which ensures easier and quality installation.



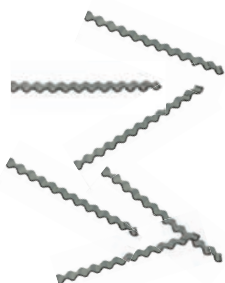
1/1 **M14 thread**

ID: 03978



1/1 **6-edge mounting part**

ID: 03979



CORRUGATED BONDING ELEMENT

For sanitation of cracks and bridging of dilatation joints in esters

Corrugated binding element, used with special encapsulating resins for sanitation of cracks and bridging of dilatation joints in different flooring construction.



100/1 **70 mm**

ID: 03980



100/1 **120 mm**

ID: 03981



www.kema.si



KEMA d.o.o.
Puconci 393, 9201 Puconci, Slovenia

T: ++386 2 545 95 00
F: ++386 2 545 95 29

E: info@kema.si

